

## Riverlea Park, 79 Osprey Drive

This property has been successfully leased and is no longer available.

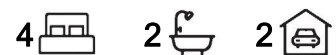
Stylish Living in Thriving Riverlea Park

TO REGISTER AND INSPECT THIS PROPERTY VISIT: <https://tenantoptions.com.au/>

\*\* Only applicants who have inspected the property will be considered \*\*

LJ Hooker Property Specialists are proud to present this beautifully crafted, newly built home located in the heart of the fast-growing and highly sought-after Riverlea Park.

Situated in one of Adelaide's newest communities, Riverlea Park offers a modern lifestyle surrounded by parks, walking trails, wetlands, and future retail and dining options, making it perfect for families, professionals, and anyone looking for a peaceful yet connected way of life.



**For Lease**  
Please Call

**View**  
[ljhooker.com.au/2BSDGJU](https://ljhooker.com.au/2BSDGJU)

**Contact**  
**Rachel Prior**  
[rachelp@ljhpropertymanagement.com.au](mailto:rachelp@ljhpropertymanagement.com.au)



**Disclaimer:** All information contained therein is gathered from relevant third parties sources. We cannot guarantee or give any warranty about the information provided. Interested parties must rely solely on their own enquiries.

**LJ Hooker Greenwith | Golden Grove  
| Mawson Lakes | Modbury  
(08) 8289 6660**

### Property Highlights:

- \*Master bedroom with walk-in robe and private ensuite
- \*Bedrooms 2 & 3 with built-in robes
- \*Bedroom 4 at the front, ideal as a study, nursery, or playroom
- \*Stylish main bathroom with free-standing bath and separate powder room
- \*Functional laundry with ample cupboard space
- \*Floorboards throughout the property
- \*Light-filled open-plan living and dining with built-in storage
- \*Modern kitchen with island bench, gas cooktop, butler's pantry, and dishwasher
- \*Reverse cycle ducted air conditioning for year-round comfort
- \*Double garage with auto roller door and internal access
- \*Alfresco entertaining area and fully fenced, low-maintenance backyard

### Location Features:

- \*Set in the emerging Riverlea Park estate, just 30 minutes from Adelaide CBD
- \*Surrounded by green spaces, landscaped reserves, and scenic walking trails
- \*Close to local schools, shops, and planned future shopping centres and community hubs
- \*Easy access to the expressway
- \*Enjoy a peaceful suburban lifestyle with all modern conveniences nearby

This home is only 6 months old and is seeking a long-term tenant who will appreciate its style, quality, and unbeatable location.

Please contact us during office hours on 8289 6660 (Monday-Friday 9am-5.30pm) if you have any queries regarding the application process. If your queries relate to an open inspection time, please be advised that all open times are updated every Friday by close of business. If you are unable to attend the open inspection or there are no open times scheduled, please send your enquiry through this website.

RLA 208516

## More About this Property

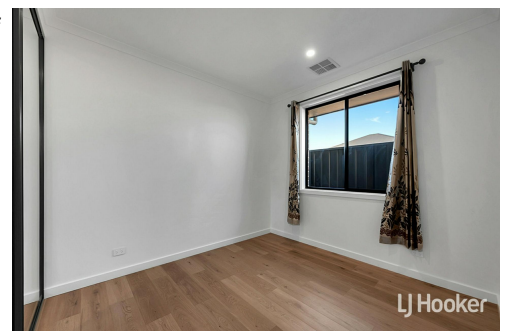
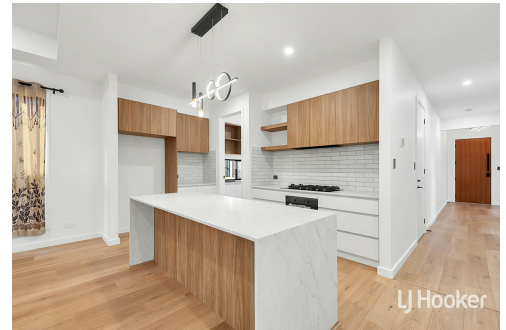
Property ID	2BSDGJU
Property Type	House

### Rachel Prior

Property Investment Specialist | [rachelp@ljhpropertymanagement.com.au](mailto:rachelp@ljhpropertymanagement.com.au)

**LJ Hooker Greenwith | Golden Grove | Mawson Lakes | Modbury (08) 8289 6660**

North East, Shop 2, 1007 North East Road, RIDGEHAVEN SA 5097  
[greenwithgoldengrove.ljhooker.com.au](http://greenwithgoldengrove.ljhooker.com.au) | [info@ljhsupport.com.au](mailto:info@ljhsupport.com.au)



**Disclaimer:** All information contained therein is gathered from relevant third parties sources. We cannot guarantee or give any warranty about the information provided. Interested parties must rely solely on their own enquiries.

**LJ Hooker Greenwith | Golden Grove  
| Mawson Lakes | Modbury  
(08) 8289 6660**