



13 Kubba Road, Ringwood North

## Unfurnished Spacious & Updated Family Home in a Prime Ringwood North Location

Perfectly positioned in one of Ringwood North's most sought-after tree-lined streets, this well-maintained family home offers generous space, abundant natural light, and a comfortable lifestyle, complemented by elevated views across the Mullum Mullum Valley.

Set on a substantial corner block, the home combines practical design with modern updates, making it an ideal choice for families seeking space, flexibility, and convenience.

### Property Features:

- Stylishly updated interiors with modern finishes throughout
- Light-filled formal living area with elevated outlook
- Well-appointed kitchen featuring stainless steel appliances and ample storage
- Expansive covered alfresco area, perfect for year-round entertaining
- Versatile lower-level rumpus room with direct access to the backyard
- Five spacious bedrooms, including a master with walk-in robe and ensuite
- Generous backyard offering plenty of space for outdoor enjoyment

5 🏠 2 🚗 4 🚗

**FOR RENT**  
\$870 a week pw

**VIEW**  
Sat 18th Apr @ 1:30PM - 1:45PM

**AGENTS**  
Leasing Team  
0390186639  
ljhrowville@mail.inspectrealestate.com.au

**AGENCY**  
LJ Hooker Rowville  
(03) 9132 5118

All information contained therein is gathered from relevant third parties sources.  
We cannot guarantee or give any warranty about the information provided.  
Interested parties must rely solely on their own enquiries.

 **LJ Hooker**

Parking for up to four vehicles, including a secure double carport  
Additional workshop/storage space, ideal for tools or hobbies  
Solid, well-constructed home providing comfort and durability

**Location Highlights:**

Walking distance to Ringwood Heights Primary School and local preschool

Close to Norwood Secondary College and leading private schools, including Yarra Valley Grammar, Luther College, Whitefriars College, and Donvale Christian College

Moments from Eastland Shopping Centre and Ringwood North Village

Easy access to local cafés, restaurants, supermarkets, and medical facilities

Convenient access to Costco, Bunnings, and major retail hubs

Short drive to Ringwood and Heatherdale train stations

Quick access to EastLink (M3)

Close to parks, reserves, playgrounds, and walking trails, including Mullum Mullum Creek Trail

A spacious and comfortable home in a highly convenient location perfect for families seeking both lifestyle and accessibility.

Please note: This property is offered unfurnished.

- \*\*\*\*Arranging an inspection is easy!\*\*\*\*

To book a time to inspect, simply click on the Book an Inspection

Time button OR click Contact Agent, email through your details so we can reply with available appointment times for you to register to inspect. By registering, you will be INSTANTLY informed of any updates, changes or cancellations for your appointment.

**MORE DETAILS**

Property ID                    2VWHWN  
Property Type                House

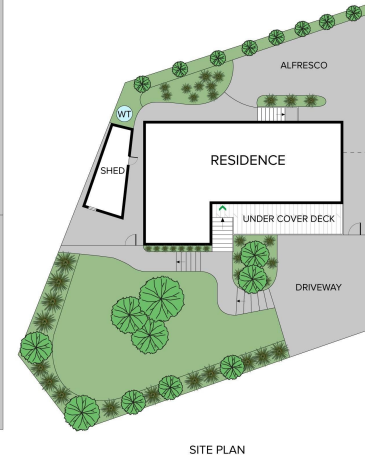
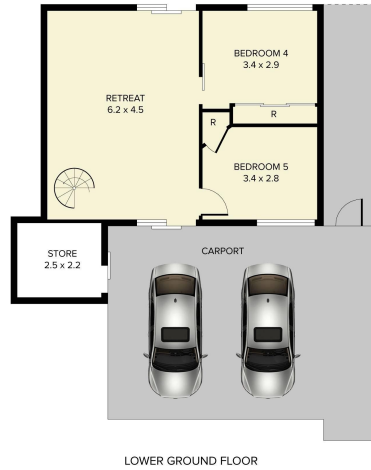
**Leasing Team 0390186639**

| [ljhrowville@mail.inspectrealestate.com.au](mailto:ljhrowville@mail.inspectrealestate.com.au)

**LJ Hooker Rowville (03) 9132 5118**

Unit 11-12/ 7 Fulham Road, ROWVILLE VIC 3178  
[rowville.ljhooker.com.au](http://rowville.ljhooker.com.au) | [rowville@ljhooker.com.au](mailto:rowville@ljhooker.com.au)





THIS PLAN IS NOT TO SCALE. MEASUREMENTS ARE INDICATIVE AND IN METRES. SITE PLAN REFLECTS APPROXIMATE POSITION OF BUILDINGS ON PROPERTY ONLY AND IS NOT AN ACCURATE REPRESENTATION OF VEGETATION AND OTHER EXTERNAL LANDSCAPE FEATURES. THIS PLAN SHOULD NOT BE RELIED UPON AND INTERESTED PARTIES SHOULD MAKE THEIR OWN ENQUIRIES.

floorpik by scandipik