



## Raymond Terrace, 2/22 Elwin Road

"Low-maintenance Living"

Looking for a peaceful and modern low-maintenance property? This stunning brick and tile unit, nestled in a quiet complex of just two, could be your perfect match! Tucked away on a no-through road, this low-maintenance gem offers both comfort and convenience, making it ideal for anyone seeking a relaxed lifestyle.

Step inside to discover a spacious open-plan living/dining area, complete with a ceiling fan and air-conditioning to keep you comfortable year-round. The timber flooring adds a touch of warmth and elegance, while the modern kitchen is a standout feature boasting an electric cooktop and oven, plus ample cupboard, and bench space for all your storage needs. Whether you're cooking up a storm or simply unwinding, this neat and tidy unit has you covered.

The two generously sized bedrooms provide plenty of space to retreat, with the main bedroom featuring air-conditioning for those warm summer nights. Both rooms come



**For Lease**  
Please Call

**View**  
[ljhooker.com.au/1DZHF6H](http://ljhooker.com.au/1DZHF6H)

**Contact**  
**Kevin Yarrington**  
0432 633 257  
[kyarrington.maitland@ljhooker.com.au](mailto:kyarrington.maitland@ljhooker.com.au)



**Disclaimer:** All information contained therein is gathered from relevant third parties sources. We cannot guarantee or give any warranty about the information provided. Interested parties must rely solely on their own enquiries.

**LJ Hooker Maitland**  
**(02) 4933 5511**



equipped with ceiling fans and built-in robes, offering practical storage solutions. The centrally located main bathroom is stylish and functional, with a shower/bath combo perfect for a quick refresh or a long soak.

Outside, you'll love the undercover area great for relaxing or entertaining and the fully fenced, low-maintenance yard that's easy to care for. A separate single garage provides secure parking or extra storage, adding to the appeal of this well thought out property.

Location is everything, and this unit delivers! It's just a short stroll to schools, shops, and public transport, with the Williamstown RAAF base and Newcastle Airport only a quick drive away.

Whether you're heading to work or exploring nearby conveniences, you'll love the perfect mix of peace and easy access this location offers.

Plus, water usage is included with rent what more can you ask for.

Be quick as this brick beauty won't last long!

- \* Pets upon application
- \* Photos not to be relied upon

Disclaimer: The photos indicating the condition of the advertised property may or may not be an exact reflection of the current condition of the property. If you have any concerns, please contact the office to confirm this prior to any inspection.

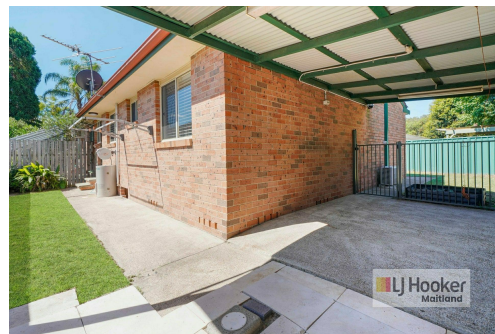
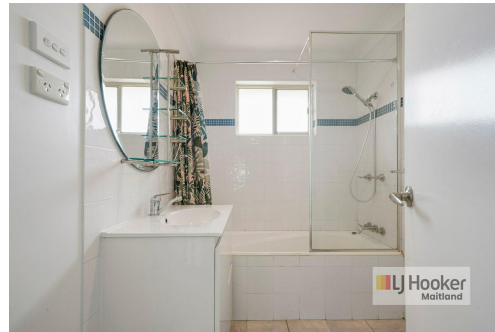
All information contained herein is gathered from sources we deem to be reliable. However, we cannot guarantee its accuracy and interested persons should rely on their own enquiries.

## More About this Property

Property ID	1DZHF6H
Property Type	Unit
Including	Air Conditioning Built-in-Robes Carpeted Close to Schools Close to Shops Close to Transport

**Kevin Yarrington 0432 633 257**  
Property Investment Manager | [kyarrington@maitland.ljhooker.com.au](mailto:kyarrington@maitland.ljhooker.com.au)

**LJ Hooker Maitland (02) 4933 5511**  
24 Ken Tubman Drive, MAITLAND NSW 2320  
[maitland.ljhooker.com.au](mailto:maitland.ljhooker.com.au) | [maitland@ljhooker.com.au](mailto:maitland@ljhooker.com.au)



**Disclaimer:** All information contained therein is gathered from relevant third parties sources. We cannot guarantee or give any warranty about the information provided. Interested parties must rely solely on their own enquiries.

**LJ Hooker Maitland**  
**(02) 4933 5511**