



Rapid Creek, 14 Clarke Crescent

Tropo Artistic Retreat + Pool + Art Studio + Office + Solar

This property must be viewed to appreciate the diversity of the different spaces available. As you enter through the front gates of the property, you are immediately at ease within your tropical surroundings, flowing water features and lush green tropical gardens.

The home has 3 Bedrooms under the main roof plus a separate main bedroom at the rear of the home offering a private sanctuary as a parent's retreat, Plus 2 extra exterior rooms that could be used for multiple uses such as a consulting room or home office or even extra bedrooms if required.

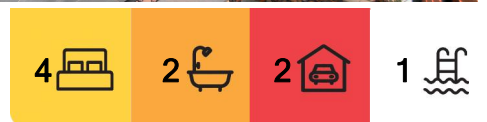
*Option of 5-6 Bedrooms

*Pool

*Solar

*Chook Shed

*Outside Laundry



For Lease
Please Call

View
ljhooker.com.au/5CQQF2X

Contact
Kylie Bonanni
kbonanni@ljhookerdarwin.com.au
Chantelle Dalton
cdalton@ljhookerdarwin.com.au



Disclaimer: All information contained therein is gathered from relevant third parties sources. We cannot guarantee or give any warranty about the information provided. Interested parties must rely solely on their own enquiries.

LJ Hooker Darwin
(08) 8924 0900

*Independent multiple-family living options

Available now

Please apply through the apply tab on the page.

Enquiries: Kylie Bonanni

0400 254 974

More About this Property

Property ID	5CQQF2X
Property Type	House
Land Area	987 sqm
Including	Ensuite Study Air Conditioning Toilets (2) Pool Courtyard Dishwasher Fully Fenced Solar Panels Liveability

Kylie Bonanni

Business Development Manager | kbonanni@ljhookerdarwin.com.au

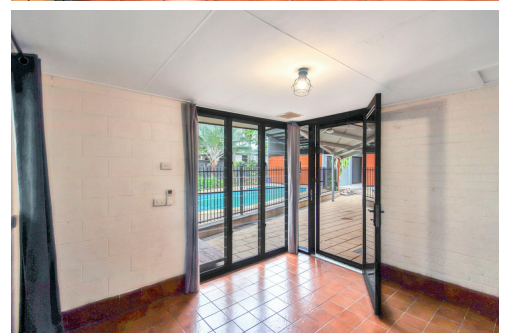
Chantelle Dalton

Property Investment Manager | cdalton@ljhookerdarwin.com.au

LJ Hooker Darwin (08) 8924 0900

Shop 1/25 Parap Road, PARAP NT 0820

darwin.ljhooker.com.au | reception@ljhookerdarwin.com.au



LJ Hooker Darwin
(08) 8924 0900

Disclaimer: All information contained therein is gathered from relevant third parties sources. We cannot guarantee or give any warranty about the information provided. Interested parties must rely solely on their own enquiries.