

## Randwick, 3/6 Abbey Street

Convenience in a Prime Parkside locale

Set in a peaceful position overlooking the magnolia trees of Alison Park, this light-filled first-floor apartment offers comfort, convenience, and lifestyle.

Ideally located just a short stroll from Belmore Road's shopping strip, local parks, and excellent public transport options, it's also within easy walking distance to UNSW and Prince of Wales Hospital.

### Features:

- \*Situated on the top floor of a boutique block of four
- \*Abundant natural light throughout
- \*Private balcony off the main bedroom
- \*Peaceful outlook over Alison Park
- \*Just footsteps to village shopping and express city transport
- \*Moments to UNSW and Prince of Wales Hospital



**Disclaimer:** All information contained therein is gathered from relevant third parties sources. We cannot guarantee or give any warranty about the information provided. Interested parties must rely solely on their own enquiries.

2

1

0

**For Lease**  
Please Call

**View**  
[ljhooker.com.au/8VFHRN](http://ljhooker.com.au/8VFHRN)

**Contact**  
**Patrick Boyd (Paddy)**  
0404 754 465  
[paddy@ljhookereast.com.au](mailto:paddy@ljhookereast.com.au)

**LJ Hooker Bondi Junction | Bondi Beach**  
**(02) 8036 7525**

## More About this Property

Property ID	8VFHRN
Property Type	Apartment

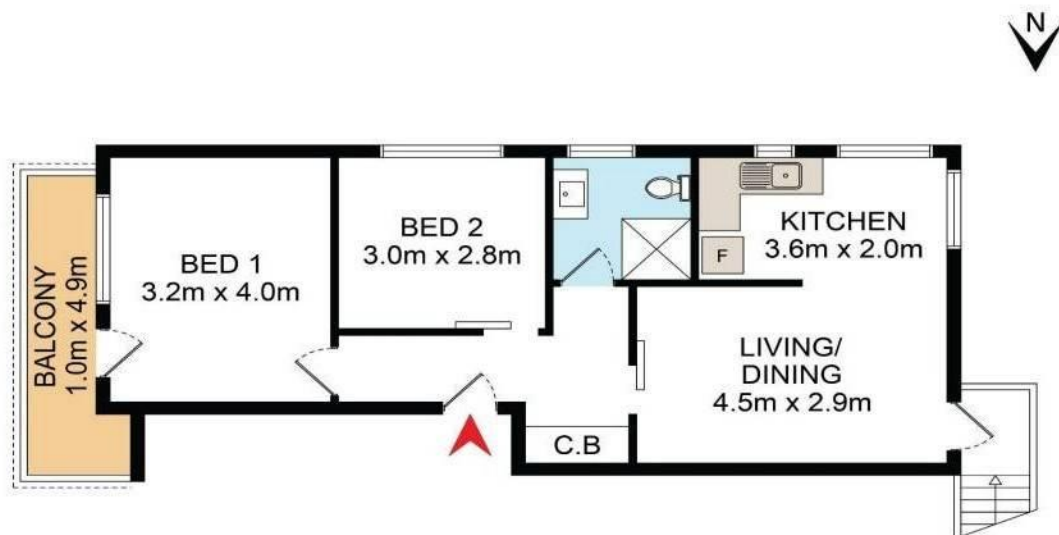
**Patrick Boyd (Paddy) 0404 754 465**  
Sales Associate | [paddy@ljhookereast.com.au](mailto:paddy@ljhookereast.com.au)

**LJ Hooker Bondi Junction | Bondi Beach (02) 8036 7525**  
62 Spring Street, BONDI JUNCTION NSW 2022  
[bondi.ljhooker.com.au](mailto:bondi.ljhooker.com.au) | [admin@ljhookereast.com.au](mailto:admin@ljhookereast.com.au)



**Disclaimer:** All information contained therein is gathered from relevant third parties sources.  
We cannot guarantee or give any warranty about the information provided. Interested parties must rely solely on their own enquiries.

**LJ Hooker Bondi Junction | Bondi Beach**  
**(02) 8036 7525**



3/6 Abbey Street

Randwick

DISCLAIMER: THIS IS FOR ILLUSTRATIVE PURPOSES ONLY.  
ALL DIMENSIONS ARE APPROXIMATE AND IT DOES NOT  
CONSTITUTE PART OF ANY LEGAL DOCUMENTS.