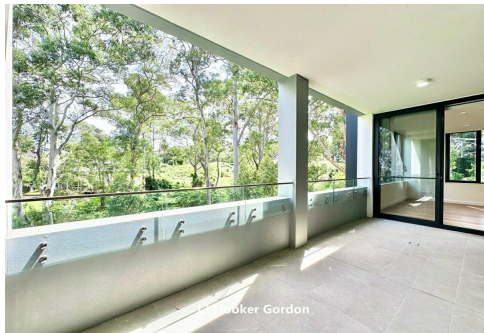




LJ Hooker Gordon



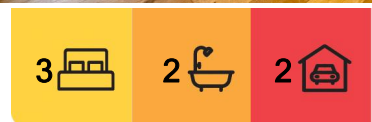
Pymble, W1008/1 Avon Road

Spacious North Facing Home with Leafy Views

Located in the premium 'One Avon' community this modern 3-bedroom apartment offers a luxurious lifestyle. Positioned on an exclusive corner location with ample windows allowing an abundance of natural light to flow through the apartment from the northerly aspects, whilst the spacious open plan living and dining areas flow seamlessly outside to the large entertainer's balcony with leafy views.

Boasting a chef's kitchen with a double sink, expansive freestanding stone island and dedicated breakfast bar as well as top end appliances including an integrated dishwasher.

Three spacious bedrooms provide leafy views and have been designed with comfort and privacy in mind, the master featuring a walk-through robe and



For Lease

Please Call

View

ljhooker.com.au/SFSHJX

Contact

Kenny Gong

0456 887 000

kgong@ljhookergordon.com.au



LJ Hooker Gordon
(02) 9496 8000

Disclaimer: All information contained therein is gathered from relevant third parties sources. We cannot guarantee or give any warranty about the information provided. Interested parties must rely solely on their own enquiries.

large en-suite whilst the other two bedrooms are both generous in size with built-ins.

Complete with beautiful, engineered oak flooring throughout the living areas, ducted air conditioning, plenty of storage cupboards throughout, two secure parking spaces plus secure storage cage.

This property features outstanding on-site amenities for residents including an indoor gym, residential library, barbeque area, entertaining centre, landscaped grounds, children's play area, and on-site building management.

Experience this luxurious North Shore lifestyle in this ultra convenient, short walk to rail location, ready to enjoy.

Property Features:

- Large corner apartment on a high floor level with leafy views
- Exclusive corner location with northerly aspects for an abundance of light
- Open plan living and dining flowing to an oversized entertaining balcony
- Chefs' kitchen with Miele appliances, incl. integrated dishwasher, stone island and double sink
- Three generous bedrooms, master with walk-through robe and spacious en-suite, all bedrooms with built-ins
- Engineered flooring, ample storage cupboards, internal ducted air conditioning and ample storage throughout
- Two secure basement car parking spaces plus basement storage
- On-site amenities including indoor gym, residential library, barbeque area, entertaining centre, manicured grounds, children's play area, and on-site building management
- Only approx. 550m from Pymble Train Station, close to Pymble shops and other conveniences
- Located across the road from Pymble Ladies College and easy access to North Shore elite schooling options.

DISCLAIMER: All information contained herein is gathered from sources that we believe reliable. We have no reason to doubt its accuracy, however we cannot guarantee it. This information is not to be used in formalising any decision nor used by a third party without the expressed written permission of LJ Hooker Gordon

More About this Property

Property ID SFSHJX

Property Type Apartment

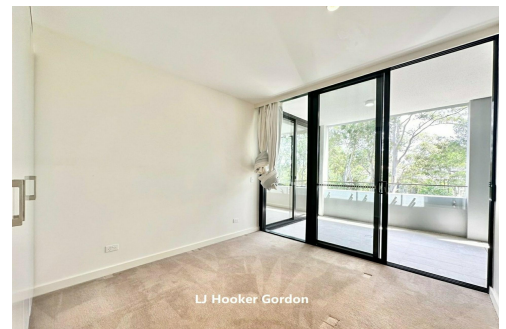
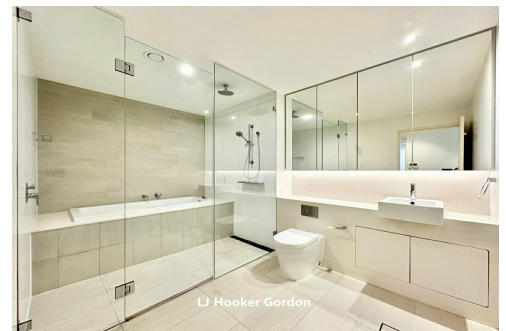
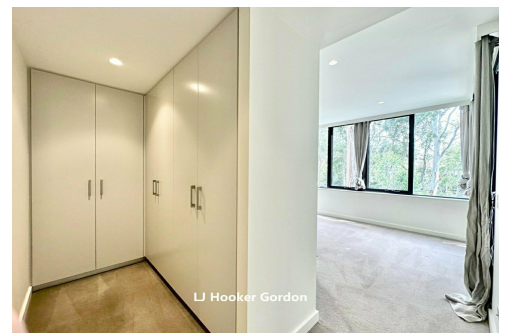
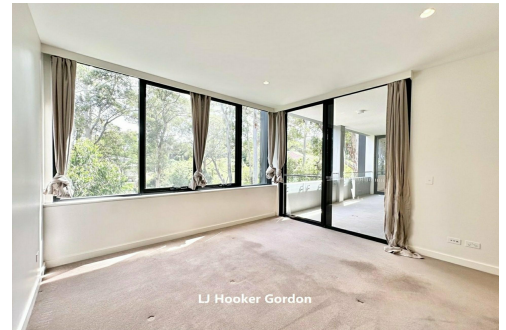
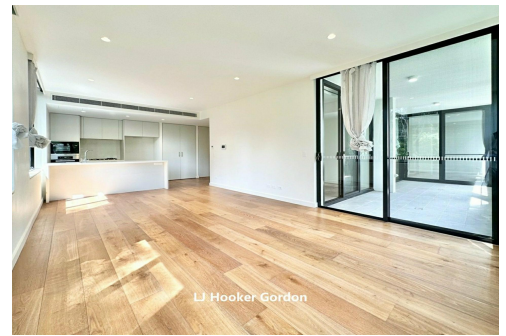
Kenny Gong 0456 887 000

Managing Director | Sales Executive | kgong@ljhookergordon.com.au

LJ Hooker Gordon (02) 9496 8000

Shop 1, 777-779 Pacific Highway, GORDON NSW 2072

gordon.ljhooker.com.au | reception@ljhookergordon.com.au



LJ Hooker Gordon
(02) 9496 8000

Disclaimer: All information contained therein is gathered from relevant third parties sources. We cannot guarantee or give any warranty about the information provided. Interested parties must rely solely on their own enquiries.