



188A Victoria Street, Potts Point

**\*\*DEPOSIT TAKEN\*\***

**\*\*INSPECTIONS CANCELLED\*\***

## Stylish Three-Level Executive Apartment with Loft Suite & Three Balconies


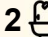
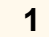
Positioned in the vibrant heart of Potts Point, this stunning 150sqm executive apartment offers a rare combination of space, flexibility and high-end finishes-perfect for those seeking a sophisticated inner-city lifestyle.

Spanning three levels within an exclusive boutique complex of just four residences, the apartment showcases a thoughtfully designed layout with a bright open-plan living area, premium materials and seamless indoor-outdoor flow. Three private balconies capture leafy outlooks along Victoria Street toward the CBD, while the loft-style master retreat adds a unique sense of space and privacy.

Property Features:

Features:

- Three private balconies with leafy outlooks toward the CBD

3  2  1 

**FOR RENT**

**\*\*DEPOSIT TAKEN\*\*\$1,800 pw**

**VIEW**

By Appointment

**AGENTS**

Paloma Soulos

0466 975 880

paloma.soulos@ljhdoulebay.com

**AGENCY**

LJ Hooker Double Bay

(02) 9185 2816

All information contained therein is gathered from relevant third parties sources.  
We cannot guarantee or give any warranty about the information provided.  
Interested parties must rely solely on their own enquiries.

 **LJ Hooker**

- Unique loft-style master suite with added privacy
- Versatile third bedroom ideal as a home office or guest room
- Premium finishes including marble accents, polished floors and custom cabinetry
- " Boutique building of only four apartments
- " Unbeatable Potts Point location, moments to cafés, dining, supermarkets and transport

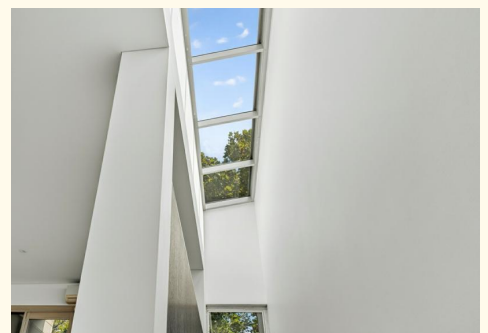
Surrounded by some of Sydney's best cafés, restaurants and everyday conveniences, with public transport at your doorstep, this is an exceptional opportunity to secure a premium rental in a highly sought-after location.

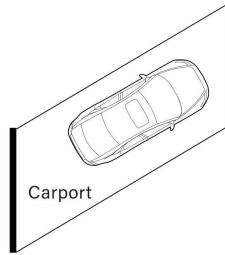
## MORE DETAILS

Property ID                    2K6HYY  
 Property Type                Apartment

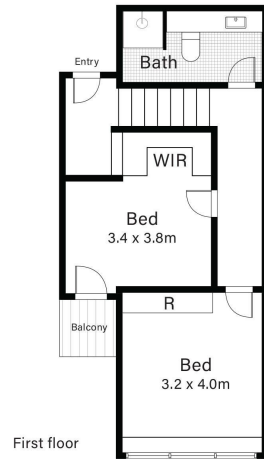
**Paloma Soulos 0466 975 880**  
 Head of Property Management / LREA |  
[paloma.soulos@ljhdouletbay.com](mailto:paloma.soulos@ljhdouletbay.com)

**LJ Hooker Double Bay (02) 9185 2816**  
 38 Ocean Street, WOOLLAHRA NSW 2025  
[doublebay.ljhooker.com.au](http://doublebay.ljhooker.com.au) | [admin@ljhdouletbay.com](mailto:admin@ljhdouletbay.com)

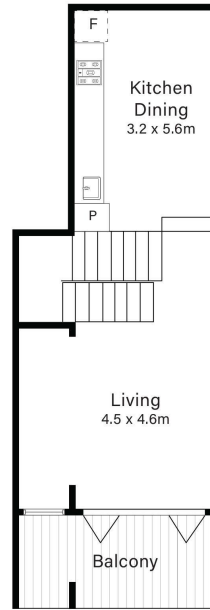




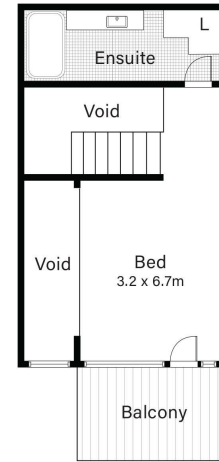
Ground floor



First floor



Second floor



Third floor

INDICATIVE ONLY. ALL INFORMATION CONTAINED HEREIN IS OBTAINED FROM SOURCES WE BELIEVE TO BE ACCURATE. IF INTERESTED PERSONS SHOULD MAKE THEIR OWN ENQUIRIES.