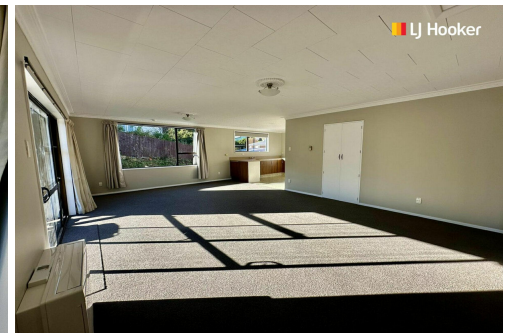


LEASED



Port Chalmers, 33 Wickliffe Terrace

Tidy, spacious and sunny - a winning combo

To View: Please register in Trademe for the set viewing time and day

Browse the cafes, bars and second-hand shops at the weekends, or walk through the gorgeous rhododendron dell to the Careys Bay wharf, hotel and harbour. Local shopping offers a supermarket, library, doctors and other amenities.

This home has recently undergone a makeover with new carpet throughout, freshly painted, new drapes, brand new bathroom never been used! The tidy kitchen offers practicality and plenty of storage, while the large living room welcomes you into the home and is super sunny. The two spacious bedrooms provide ample space for your slumber and the new bathroom is easy to use and the large shower is a bonus! With only fifteen minutes to the university, hospital and CBD, this property offers country living while being a short distance to the city. You really have the best of both worlds here.

2 

1 

1 

For Lease
Please Call

View
ljhooker.co.nz/3N8NGDS

Contact
Nathan Dickson
027 214 7265
nathan@ljhdunedin.co.nz

- Two bedrooms
- New bathroom
- New carpet
- Ample storage throughout
- Brand new heat pump in lounge
- Sunny position
- Close to transport, schools and town center
- Off street parking
- NO PETS

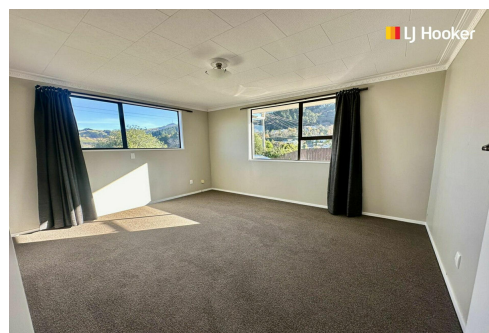
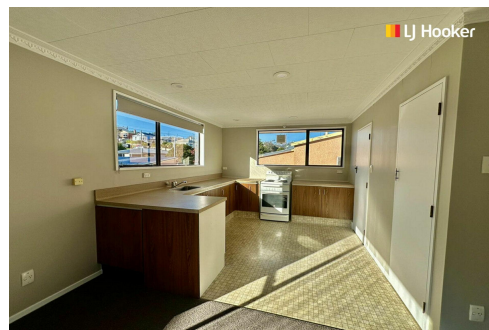
Don't delay in viewing this gem of a home today!

More About this Property

Property ID	3N8NGDS
Property Type	House
Including	Toilets (1)
Licensed Real Estate Agents (REAA2008)	

Nathan Dickson 027 214 7265
Leasing Agent | nathan@ljhdunedin.co.nz

LJ Hooker Dunedin (03) 470 1370
Wayne Graham Realty Ltd
63 Musselburgh Rise, DUNEDIN 9013
dunedin.ljhooker.co.nz | dunedin@ljhdunedin.co.nz



Disclaimer: All information contained therein is gathered from relevant third parties sources.
We cannot guarantee or give any warranty about the information provided. Interested parties must rely solely on their own enquiries.

LJ Hooker Dunedin
(03) 470 1370
Wayne Graham Realty Ltd