

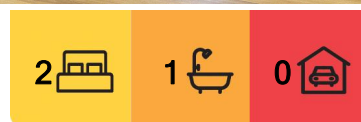
Picton, 217a Menangle Street

Brand new, 2 bedroom modern granny flat.

This brand new property is located in a convenient position, being a 30 second walk to Picton train station, making it easy for commuters. The property is secluded with easy access via access handle.

Features include :

- Spacious living area
- 2 bedrooms both with built in wardrobes
- Floorboards throughout for easy cleaning
- Split system a/c
- Modern kitchen with brand new gas and electric appliances
- Large linen cupboard for storage
- Extra large modern bathroom
- Rinnai instant hot water



For Lease
Please Call

View
ljhooker.com.au/4AFHV8

Contact
Emily Kent
02 4677 3441
emily.kent@ljhooker.com.au



Disclaimer: All information contained therein is gathered from relevant third parties sources. We cannot guarantee or give any warranty about the information provided. Interested parties must rely solely on their own enquiries.

LJ Hooker Picton
(02) 4677 3441

Pets considered upon application.

Please note, fly screens will be installed 4.12.24

We recommend you apply prior to viewing property.

More About this Property

Property ID	4AFHV8
Property Type	House

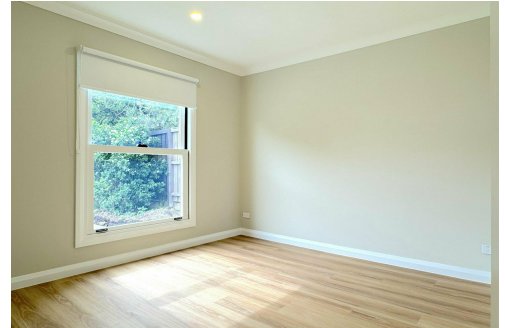
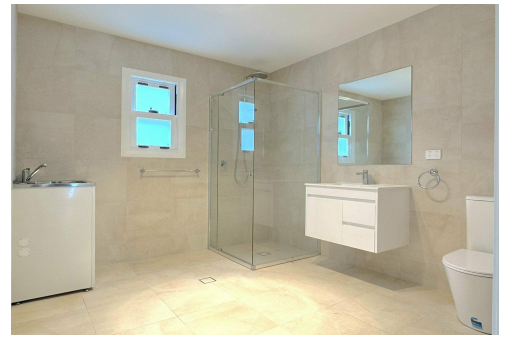
Emily Kent 02 4677 3441

Office Associate | emily.kent@ljhooker.com.au

LJ Hooker Picton (02) 4677 3441

Suite 20, 150-158 Argyle Street, PICTON NSW 2571

picton@ljhooker.com.au | picton@ljhooker.com.au



Disclaimer: All information contained therein is gathered from relevant third parties sources.
We cannot guarantee or give any warranty about the information provided. Interested parties must rely solely on their own enquiries.

**LJ Hooker Picton
(02) 4677 3441**