

## Pearsall, 15 Grenache Chase

4x3, theatre, ducted reverse cycle a/c

Home open 10.40-11.00am Sunday 30th June

This well positioned family home has a thoughtfully designed floor plan.

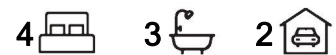
4x3 with separate theatre or a large 5x3 family home, the choice is yours.

As you enter into the home you will take note of the wide open hall with space for a coat rack.

The spacious front theatre is equipped with double doors and has a mirrored robe to enable it to be used as a guest bedroom.

Continuing through to the large open plan living space the ceilings rises up to 31c and the area connects seamlessly to the alfresco equipped with a ceiling fan and overlooking the large artificially turfed back yard.

Then all the spacious bedrooms are close by each other in the back section of the home



**For Lease**  
Please Call

**View**  
[ljhooker.com.au/HS3HRD](http://ljhooker.com.au/HS3HRD)

**Contact**  
**Andrea Else**  
0435 135 687  
[pm1.joondalup@ljhooker.com.au](mailto:pm1.joondalup@ljhooker.com.au)



**Disclaimer:** All information contained therein is gathered from relevant third parties sources. We cannot guarantee or give any warranty about the information provided. Interested parties must rely solely on their own enquiries.

**LJ Hooker Joondalup**  
**(08) 9300 2100**

with the master at the very rear.

Well trained pets considered.

This home is loaded with features:

- Whole home ducted reverse cycle AC
- Timber flooring
- Stone bench tops throughout
- Gloss white cabinets with overhead cupboards
- 900mm Stainless steel appliances
- Quality Carpets
- High Ceilings

This home presents very nice, it has great quality finishes, it is in an amazing location, and it has an ideal layout.

## More About this Property

Property ID	HS3HRD
Property Type	House
Including	Ensuite Air Conditioning Toilets (3) Outdoor Entertaining Built-in-Robes Secure Parking Fully Fenced Remote Garage

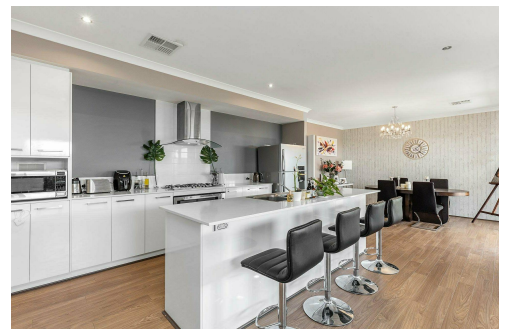
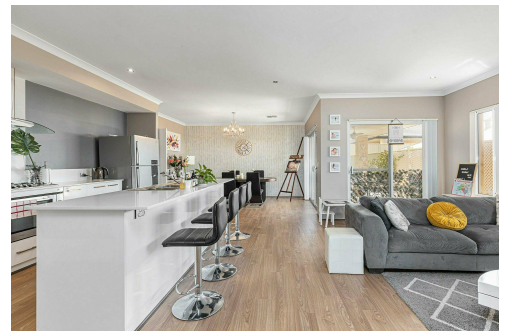
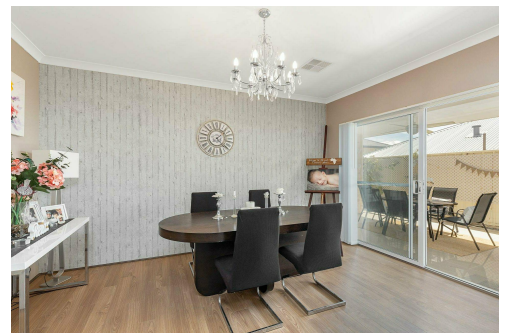
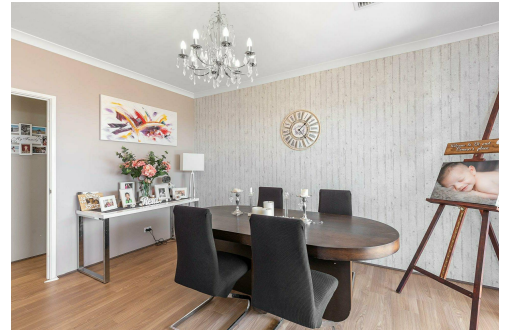
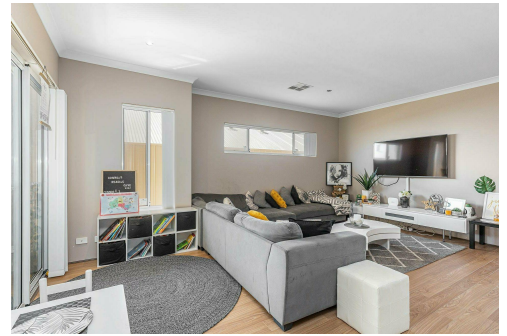
**Andrea Else 0435 135 687**

Property Manager | [pm1.joondalup@ljhooker.com.au](mailto:pm1.joondalup@ljhooker.com.au)

**LJ Hooker Joondalup (08) 9300 2100**

4/25 Delage Street, JOONDALUP WA 6027

[joondalup.ljhooker.com.au](mailto:joondalup.ljhooker.com.au) | [admin.joondalup@ljhooker.com.au](mailto:admin.joondalup@ljhooker.com.au)



**Disclaimer:** All information contained therein is gathered from relevant third parties sources. We cannot guarantee or give any warranty about the information provided. Interested parties must rely solely on their own enquiries.

**LJ Hooker Joondalup**  
**(08) 9300 2100**