

## Papakura, 24 Sutton Crescent

Solid 3-Bedroom Brick & Tile Home - Great Location!

This well-maintained, classic brick and tile home offers comfortable living in a convenient location. With three bedrooms, a modernised kitchen, and a covered carport, this property is a great choice for families or professionals seeking easy living close to essential amenities.

Situated close to local schools, shops, and public transport, everything you need is right at your doorstep.

### \*\*Property Features:\*\*

- 3 generously sized bedrooms with built-in wardrobes
- 1 tidy bathroom with a separate toilet
- Modernised kitchen with ample storage
- Separate laundry area
- Covered carport for secure parking



**Disclaimer:** All information contained therein is gathered from relevant third parties sources. We cannot guarantee or give any warranty about the information provided. Interested parties must rely solely on their own enquiries.

3

1

0

### For Lease

\$600 per week

### View

By Appointment

### Contact

**Phoebe Dunn**  
papakura@ljhooker.co.nz

**Phoebe Dunn**  
papakura@ljhooker.co.nz

**LJ Hooker Papakura**  
(09) 296 5000  
Kallil Real Estate Ltd



- Low-maintenance section
- Close to schools, shops, and public transport

Don't miss your chance to secure this solid and reliable home.

**\*\*VIEWING INSTRUCTIONS\*\***

In order to conduct a viewing, we will need your full name and contact number. We also would highly recommend that you copy and paste the link below into your browser as this link will take you to a page that allows you to fill in some further information that will help us speed up the process for you.

<https://apply.tenant.co.nz/6879529>

Note that, when applying for a property, all applicants over the age of 18 years must complete their own application form.

Viewing strictly by appointment.

**MOVE-IN COSTS:**

- \*1st weeks Rent - \$600
- \*Bond (4 weeks rent) - \$2,400
- \*Total - \$3,000

**LANDLORDS - DO YOU NEED A PROPERTY MANAGER?**

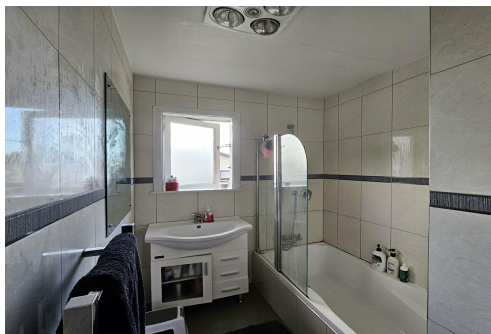
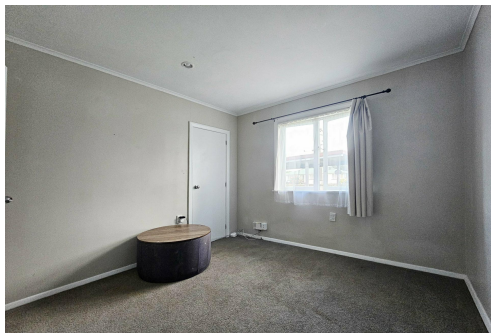
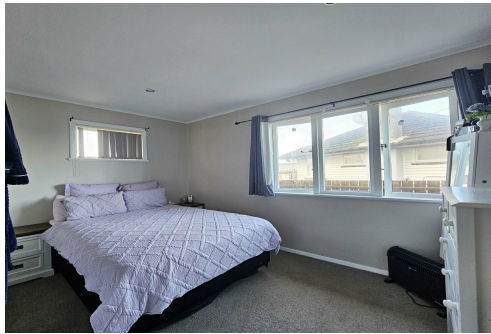
If you are looking for a property manager, then contact our office anytime to discuss how we can manage your home and take all of the stress away from you. Contact 09 296 5000 or papakura@ljhooker.co.nz

## More About this Property

Property ID	G3PGFC
Property Type	House
Licensed Real Estate Agents (REAA2008)	

**Phoebe Dunn**  
 Property Management | papakura@ljhooker.co.nz  
**Phoebe Dunn**  
 Property Management | papakura@ljhooker.co.nz

**LJ Hooker Papakura (09) 296 5000**  
 Kallil Real Estate Ltd  
 19 Broadway, PAKAKURA NZ 2110  
 papakura.ljhooker.co.nz | papakura@ljhooker.co.nz



**Disclaimer:** All information contained therein is gathered from relevant third parties sources. We cannot guarantee or give any warranty about the information provided. Interested parties must rely solely on their own enquiries.

**LJ Hooker Papakura**  
**(09) 296 5000**  
 Kallil Real Estate Ltd