

Papakura, 11 Salas Place

Spacious Family Home in Papakura

Located in a peaceful cul-de-sac, this spacious five-bedroom, two-bathroom family home offers the perfect balance of comfort, functionality, and convenience. Designed for modern living, the property features two separate living areas and a large covered entertaining deck, making it ideal for families who enjoy both relaxation and entertaining. This is a rare opportunity to secure a spacious and well-appointed family home in a prime location.

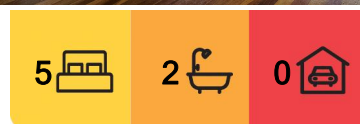
As an added advantage, the home is equipped with ****solar power panels****, which significantly reduces energy costs.

Situated in a highly sought-after location, this exceptional residence provides easy access to schools, shops and public transport, ensuring everyday convenience for the entire family.

****Main features:****



Disclaimer: All information contained therein is gathered from relevant third parties sources. We cannot guarantee or give any warranty about the information provided. Interested parties must rely solely on their own enquiries.



For Lease
Please Call

View
[ljhooker.co.nz/G2KGFC](https://l.jhooker.co.nz/G2KGFC)

Contact
Michaela Greeves
papakura@ljhooker.co.nz

LJ Hooker Papakura
(09) 296 5000
Kallil Real Estate Ltd

- 5 good size Bedrooms with built in wardrobes
- 2 Full size Bathrooms
- 1 Office/Study space
- 2 Separate living areas
- Open Kitchen & Dining areas
- Large, covered entertaining deck
- Close to schools, shops and public transport

Please note: This property is ****not**** suitable for Pets or Smokers

****VIEWING INSTRUCTIONS****

In order to conduct a viewing, we will need your full name and contact number. We also would highly recommend that you copy and paste the link below into your browser as this link will take you to a page that allows you to fill in some further information that will help us speed up the process for you.

<https://apply.tenant.co.nz/6488931>

Note that, when applying for a property, all applicants over the age of 18 years must complete their own application form.

Viewing strictly by appointment.

MOVE-IN COSTS:

- *1st weeks Rent - \$725
- *Bond (4 weeks rent) - \$2,900
- *Total - \$3,625

LANDLORDS - DO YOU NEED A PROPERTY MANAGER?

If you are looking for a property manager, then contact our office anytime to discuss how we can manage your home and take all of the stress away from you. Contact 09 296 5000 or papakura@ljhooker.co.nz

More About this Property

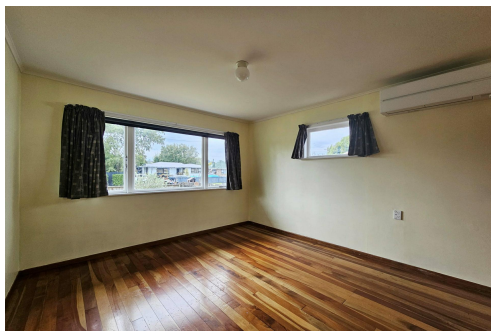
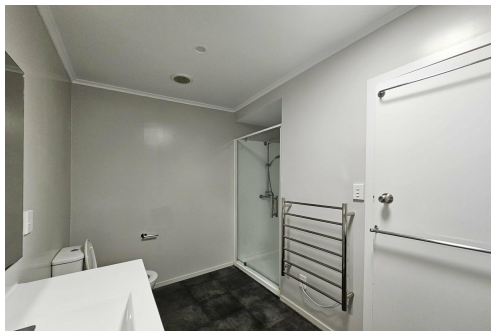
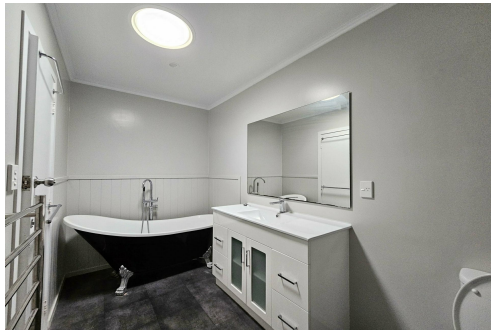
Property ID	G2KGFC
Property Type	House
Licensed Real Estate Agents (REAA2008)	

Michaela Greeves
Administration | papakura@ljhooker.co.nz

LJ Hooker Papakura (09) 296 5000
Kallil Real Estate Ltd
19 Broadway, PAPAKURA NZ 2110
papakura.ljhooker.co.nz | papakura@ljhooker.co.nz



Disclaimer: All information contained therein is gathered from relevant third parties sources. We cannot guarantee or give any warranty about the information provided. Interested parties must rely solely on their own enquiries.



LJ Hooker Papakura
(09) 296 5000
Kallil Real Estate Ltd