



Leased



1 Unison Way, Palmview

APPLICATIONS PENDING


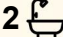
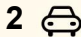
APPLICATIONS PENDING

Ideally positioned on a corner block opposite a nature reserve this stunning new terrace house is available for your family now. Partially furnished this beautiful home offers space for all the family with multiple living areas.

Other features of this property include:

- Modern luxurious design
- 4 bedrooms
- Open plan family, dining, kitchen
- Separate lounge upstairs
- Study nook
- Spacious kitchen, stone benches with fridge
- Garage with epoxy floor
- Plantation shutters
- Seamless indoor outdoor living
- Entertainers alfresco with retractable blinds
- Ducted cooling throughout
- Low maintenance fully fenced yard
- Partially furnished (as seen in photographs)

This brand new Terrace home is available now to move in.

4  2  2 

FOR RENT

Please Call

AGENTS

Julene Moore

jmoore.twinwaters@ljhooker.com.au

AGENCY

LJ Hooker Twin Waters

(07) 5450 6188

All information contained therein is gathered from relevant third parties sources.
We cannot guarantee or give any warranty about the information provided.
Interested parties must rely solely on their own enquiries.

 **LJ Hooker**

For more information please use the online enquiry form or email rentals.twinwaters@ljhooker.com.au. Contact Julene at LJ Hooker Twin Waters to arrange your viewing today on 07 5450 6188.

MORE DETAILS

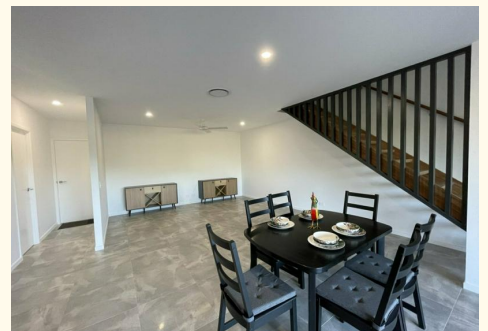
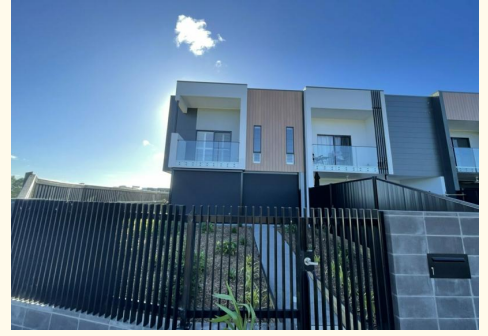
Property ID	KE0GZT
Property Type	House
Including	Ensuite
	Ducted Cooling
	Ducted Heating
	Toilets (3)
	Balcony
	Outdoor Entertaining
	Built-in-Robes
	Secure Parking
	Fully Fenced
	Remote Garage

Julene Moore

Property Manager | jmoore.twinwaters@ljhooker.com.au

LJ Hooker Twin Waters (07) 5450 6188

Shop 2, 175 Ocean Drive, TWIN WATERS QLD 4564
twinwaters.ljhooker.com.au | info.twinwaters@ljhooker.com.au



All information contained therein is gathered from relevant third parties sources.
We cannot guarantee or give any warranty about the information provided.
Interested parties must rely solely on their own enquiries.