

Pakenham, 21 Expedition Circuit

THREE BEDROOM HOME

This near new home is perfectly positioned in a quiet complex North of the Highway, with parks, child care centres, milkbar, primary and secondary schools, public transport all close by. Plus a short drive to M1 & Pakenham's CBD.

Boasting -

Master bedroom with walk in robe & ensuite,

Two remaining bedrooms with built in robes,

Open plan kitchen, dining and living area with split system,

Kitchen complete with island bench, dishwasher and 600mm stainless steel cooking,

Centrally located bathroom,

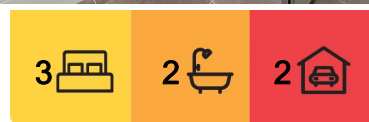
Laundry with plenty of space,

Ducted heating,

Double garage with internal and rear access,

Grassed yard with garden shed.

Be quick to register your interest!



For Lease

\$520 per week

View

By Appointment

Contact

Holly Obzetic-Halfyard

hobzetichalfyard.pakenham@ljhooker.com.au



LJ Hooker Pakenham
(03) 5943 8000

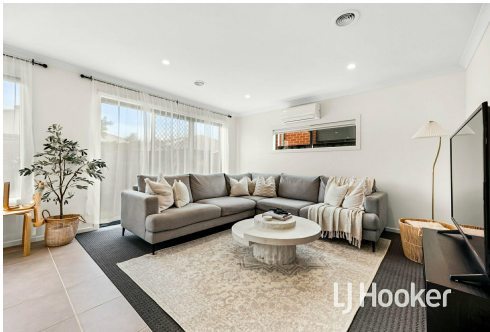
Disclaimer: All information contained therein is gathered from relevant third parties sources. We cannot guarantee or give any warranty about the information provided. Interested parties must rely solely on their own enquiries.

More About this Property

Property ID	1PGAFC9
Property Type	House
Including	Ensuite Air Conditioning Ducted Heating Dishwasher Built-in-Robes Secure Parking Fully Fenced

Holly Obzetic-Halfyard
Property Investment Manager | Licensed Estate Agent |
hobzeticalfyard.pakenham@ljhooker.com.au

LJ Hooker Pakenham (03) 5943 8000
45 John Street, PAKENHAM VIC 3810
pakenham.ljhooker.com.au | pakenham@ljhooker.com.au



LJ Hooker Pakenham
(03) 5943 8000

Disclaimer: All information contained therein is gathered from relevant third parties sources.
We cannot guarantee or give any warranty about the information provided. Interested parties must rely solely on their own enquiries.