

Pakenham, 136 Timberline Parkway

Brand New Spacious Home!

This brand new, modern & spacious home with all the extra's is sure to suit even the fussiest of renters. Perfectly situated in the highly sort after Mount Pleasant estate with a short distance to public transport, parks and walking trails, Pakenham Lifestyle centre, Lakeside shopping centre including Coles & Aldi, medical facilities, beauty salons, restaurants and take away, Cardinia Life, sporting ovals and a short drive to Pakenham's CBD & M1.

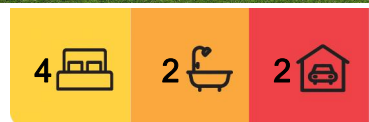
Boasting -

Enormous master bedroom, walk in robe with extra shelving and hanging space, ensuite complete with double vanity with stone bench tops, storage, oversized shower with dumper shower head, separate toilet,

Open theatre room,

Open plan kitchen, dining and living area overlooking the alfresco and backyard,

Commodious kitchen comprising of stone bench tops, stainless steel dishwasher and huge



For Lease
Please Call

View
ljhooker.com.au/1NEWFC9

Contact
Adeline Johnston
ajohnston.pakenham@ljhooker.com.au



LJ Hooker Pakenham
(03) 5943 8000

Disclaimer: All information contained therein is gathered from relevant third parties sources. We cannot guarantee or give any warranty about the information provided. Interested parties must rely solely on their own enquiries.

cooker, walk in pantry,
 Spacious laundry with broom and linen robe,
 Kids wing -
 Rumpus room with single robe for storage,
 Three remaining bedrooms with built in robes,
 Family bathroom with oversized shower and stone bench tops,
 Separate toilet,
 Ducted heating and evaporative cooling throughout,
 Massive alfresco,
 All on a good sized, low maintenance block.
 Grass and side gate to be installed

This is one best seen to be believed.

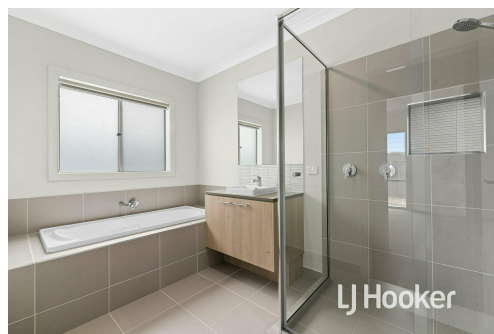
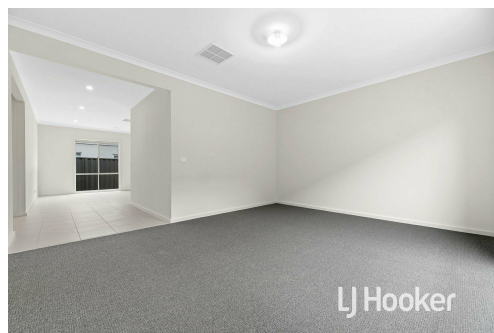
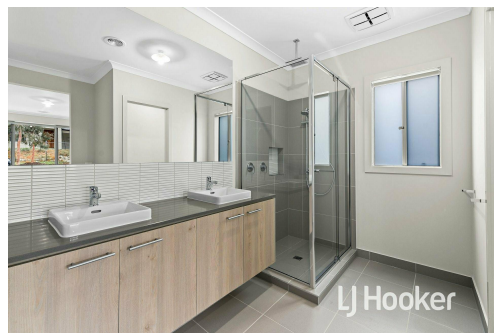
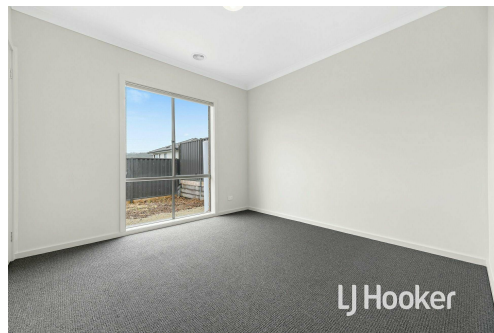
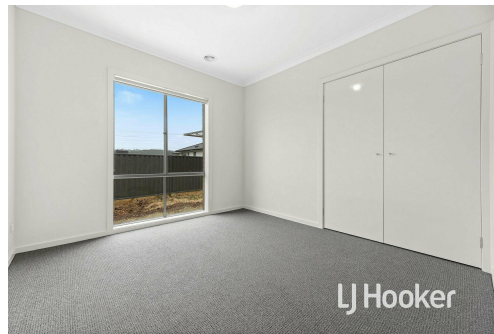
Please use the 'Request a time link to view available inspection times and register your inspection. Once registered, if there are any changes or cancellations you will be notified. If no times are available/suitable please complete all required fields and submit, and you will be notified when if additional times are made available.

More About this Property

Property ID	1NEWFC9
Property Type	House
Land Area	509 sqm
Including	Air Conditioning Ducted Heating Evaporative Cooling Dishwasher Outdoor Entertaining Built-in-Robes Remote Garage

Adeline Johnston
 Property Investment Manager | ajohnston.pakenham@ljhooker.com.au

LJ Hooker Pakenham (03) 5943 8000
 45 John Street, PAKENHAM VIC 3810
pakenham.ljhooker.com.au | pakenham@ljhooker.com.au





This drawing is for illustrative purposes only and while every effort has been made to maintain accuracy, prospective purchasers should check all information