

Paddington, 8/66 Elizabeth Street

LOCATION, LOCATION, LOCATION

2

1

1

For Lease
Please Call

View
ljhooker.com.au/1EBSH31

Welcome to your new home in the vibrant suburb of Paddington! This delightful 2-bedroom apartment is not just a place to live; it's a lifestyle choice that combines comfort, convenience, and a touch of urban flair.

Wake up to stunning views of the city skyline! The large windows not only flood the space with natural light but also provide a picturesque backdrop for your daily. You will enjoy the privacy and tranquillity this property offers along with the functional and clever use of space throughout the unit.

Enter the generous open plan, living/dining area via the front door and you will immediately feel at home with the light and airy ambience that is captured by the sliding doors that lead out to the covered balcony. Enjoy a glass of wine after a long day on the entertainers' balcony whilst appreciating the natural light and surrounding city views.



Disclaimer: All information contained therein is gathered from relevant third parties sources. We cannot guarantee or give any warranty about the information provided. Interested parties must rely solely on their own enquiries.

LJ Hooker Annerley | Yeronga | Salisbury
(07) 3848 7369

You will be able to cook up a storm in the modern kitchen which features a dishwasher and plenty of storage space. The two large bedrooms both have built-in robes and their own private balcony. All you have to do is move in and enjoy the lifestyle and convenience of living in this ideal location.

Nestled in the heart of Paddington, you'll find yourself surrounded by a plethora of cafes, boutique shops, and parks. Whether you're in the mood for a leisurely stroll or a night out on the town, everything you need is just a stone's throw away. Plus, with easy access to public transport, commuting to the city is a cinch!

Features of 8/66 Elizabeth Street at a glance:

- Open plan lounge/dining with air conditioning
- Modern kitchen with dishwasher and plenty of cupboard space
- Modern bathroom with walk-in shower
- 2 spacious bedrooms with built-in robes
- Private balcony to both bedrooms with French doors
- Single lock up garage with storage
- Stunning views over Paddington through to the city
- Within the Milton State School catchment
- Within the Kelvin Grove State College catchment
- Walking distance to Rosalie Shopping Village, eateries, shops and parks and Milton SS.
- WALK to train, bus, city cat or the CBD

BOOK AN INSPECTION ONLINE - ITS EASY!

Click on the *Book Inspection* or *Request an Inspection* Button under the open for inspections times

*** By registering for an inspection, you will be INSTANTLY informed of any updates, changes or cancellations for your property appointment. If no one registers for an inspection time - then that inspection may not proceed. If there are no times set for this property yet, STILL REGISTER and as soon as times are set, you will be advised of the day and time ****

TO APPLY for this rental property please go direct to our website (below) or contact our office on 07 3848 7369. <https://annerleyyeronga.ljhooker.com.au/search/property-for-rent/page-1>

Disclaimer: Whilst every care is taken in the preparation of the information contained herein, we will not be held liable for any errors in typing or information. All information is considered correct at the time of writing and any interested parties should satisfy themselves in this respect.



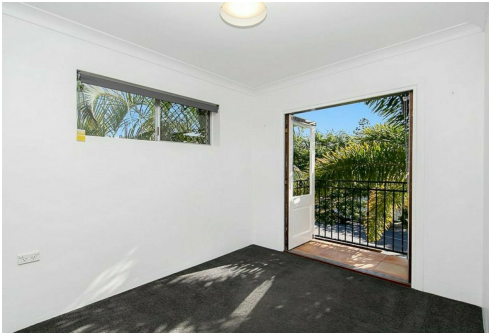
**LJ Hooker Annerley | Yeronga |
Salisbury
(07) 3848 7369**

Disclaimer: All information contained therein is gathered from relevant third parties sources. We cannot guarantee or give any warranty about the information provided. Interested parties must rely solely on their own enquiries.

More About this Property

| | |
|---------------|--|
| Property ID | 1EBSH31 |
| Property Type | Unit |
| Including | Air Conditioning Balcony Dishwasher Built-in-Robes Remote Garage |

LJ Hooker Annerley | Yeronga | Salisbury (07) 3848 7369
443 Ipswich Road, ANNERLEY QLD 4103
annerleyyeronga.ljhooker.com.au | admin@ljhookerproperty.com.au



Disclaimer: All information contained therein is gathered from relevant third parties sources.
We cannot guarantee or give any warranty about the information provided. Interested parties must rely solely on their own enquiries.

**LJ Hooker Annerley | Yeronga |
Salisbury
(07) 3848 7369**