



Paddington, 45 Elizabeth Street

Victorian Elegance in the Heart of Paddington

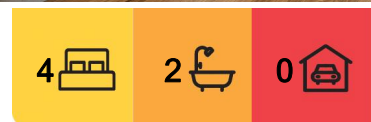
Positioned in one of Paddington's most desirable streets, this meticulously maintained tri-level Victorian terrace offers a seamless fusion of old-world charm and contemporary comfort. Boasting a timeless facade and an inviting interior, the home preserves beautiful period details like marble fireplaces, ornate timber floors, and high ceilings. Perfectly suited for families or professionals, the property provides bright, airy living spaces and a tranquil backyard retreat, ideal for relaxing or entertaining. Situated within a vibrant community, this home offers unmatched access to local cafes, boutiques, and lush parks, promising a lifestyle of both convenience and sophistication.

Property Features:

- Four bedrooms, including a spacious main with lacework balcony
- Elegant Victorian facade, a standout in a picturesque streetscape
- Original timber floors and marble fireplaces
- Thoughtfully updated with high-quality fittings throughout



Disclaimer: All information contained therein is gathered from relevant third parties sources. We cannot guarantee or give any warranty about the information provided. Interested parties must rely solely on their own enquiries.



For Lease
\$2,000 pw

View
By Appointment

Contact
Paloma Soulos
0466 975 880
paloma.soulos@ljhdoublingbay.com

LJ Hooker Double Bay
(02) 9185 2816

- Separate lounge and dining areas, maintaining classic features
- Private courtyard garden, perfect for outdoor entertaining
- Modern eat-in kitchen with gas cooking and ample storage
- Elevated position with sweeping city views from the top floor
- Quiet, low-traffic street with resident parking available
- Walking distance to Oxford Street, Five Ways, and Woollahra Village

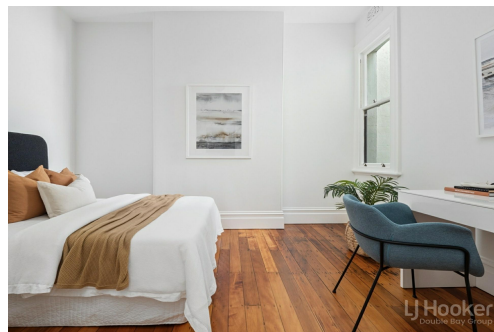
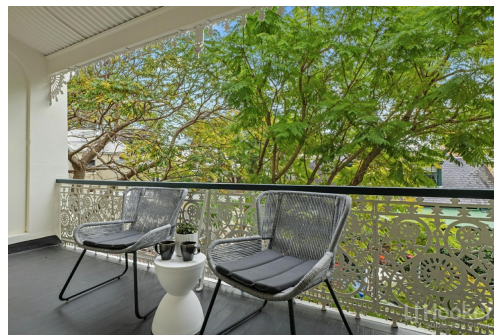
This beautiful terrace offers the perfect blend of elegance and convenience, ideal for those seeking the Paddington lifestyle. Don't miss the chance to make it your home!

More About this Property

Property ID	21MHYY
Property Type	House
Land Area	190 sqm
Including	Courtyard Balcony Dishwasher Floorboards Area Views Close to Schools Close to Shops Close to Transport

Paloma Soulos 0466 975 880
Head of Property Management / LREA | paloma.soulos@ljhdoublebay.com

LJ Hooker Double Bay (02) 9185 2816
6/710 New South Head Road, ROSE BAY NSW 2029
doublebay.ljhooker.com.au | admin@ljhdoublebay.com



Disclaimer: All information contained therein is gathered from relevant third parties sources. We cannot guarantee or give any warranty about the information provided. Interested parties must rely solely on their own enquiries.

LJ Hooker Double Bay
(02) 9185 2816