



## Pacific Pines, 3 Maty Place

### Beautiful Family Home

4 2 2 1

Set high on one of Pacific Pines elevated streets in a quiet cul de sac, is a large inviting home set on 834sqm ready for the family to create memories with a great lifestyle that will be had here.

3 bedrooms plus office or 4 bedrooms, multiple living areas with a huge living space upstairs, there is no shortage of space for family and friends. Utilize this space as you will, but the great thing is having it there on offer.

At the rear of the property is a beautiful pool area, gardens and patio where all the outdoor fun will be had. This is a great haven for the kids and the pets and of course the adults to entertain.

The location of Maty Place is truly superb and located within the catchment to the Pacific Pines primary school, plus many other state and private schools. Shopping centres, the M1 and the train station are all so handy too.

Features include:



**For Lease**  
\$1,150 per week

**View**  
By Appointment

**Contact**  
**Sharon Sams**  
0467 651 456  
sharon@ljhgc.com.au

**LJ Hooker Ormeau**  
**(07) 5549 4500**

**Disclaimer:** All information contained therein is gathered from relevant third parties sources. We cannot guarantee or give any warranty about the information provided. Interested parties must rely solely on their own enquiries.

- 4 bedrooms, master bedroom with ensuite and WIR
- 3 living areas
- Split system air conditioning in Kitchen/Dining room and first-floor lounge
- Balcony from the upstairs level offering a wide vista
- Garden shed
- Fenced pool area with palm trees and plenty of space for loungers
- Generous 834sqm block
- Covered alfresco area for entertaining
- Close to schools and amenities
- Situated on a quite cul-de-sac
- Includes pool servicing

**\*\* ARRANGE AN INSPECTION TIME ONLINE\*\***

**\*\* REGISTRATION REQUIRED \*\***

By registering, you will be INSTANTLY informed of any updates, changes or cancellations for your appointment. Please be aware that even though you may be booked in for an inspection, it does sometimes occur that the property may be leased prior to the time and date you have been given. If that occurs, you will receive a text informing you of the cancellation. Once registered, you will receive an email from our agency as to the guidelines of entry. Please ensure you read them and adhere to them strictly. Please view the photos and any visual aids you can access thoroughly to ensure that this is a home you are very interested in before registering. Due to the current situation, open homes are attendance limited, if you are unable to register for an inspection, register your interest and you will be notified when/if another open is scheduled.

**\*\* IF YOU DO NOT REGISTER FOR YOUR PRIVATE APPOINTMENT, YOU WILL NOT BE PERMITTED TO ENTER \*\***

Disclaimer: In preparing this information LJ Hooker has used its best endeavours to ensure that the information contained herein is true and accurate, but accept no responsibility and disclaim all liability in respect of any errors, omissions, inaccuracies or misstatements that may occur. Prospective tenants and buyers should make their own enquiries to verify the information contained herein. \*On application, pending owner approval.

Photos used in advertising may differ from the current state of the property. We endeavour to use the most up to date photography, however this may not be feasible to protect our current tenants' privacy. Photos may include the use of virtual furniture.



**LJ Hooker Ormeau  
(07) 5549 4500**

**Disclaimer:** All information contained therein is gathered from relevant third parties sources. We cannot guarantee or give any warranty about the information provided. Interested parties must rely solely on their own enquiries.

## More About this Property

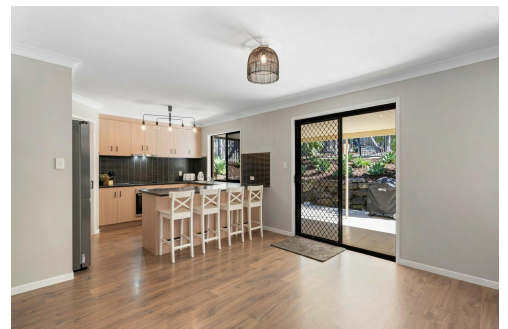
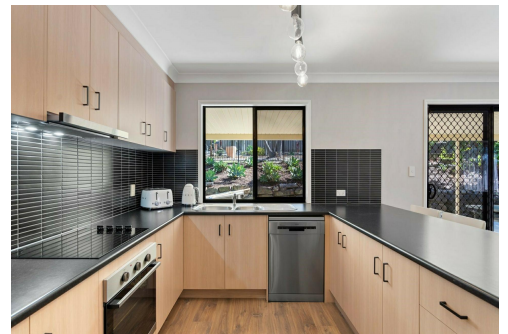
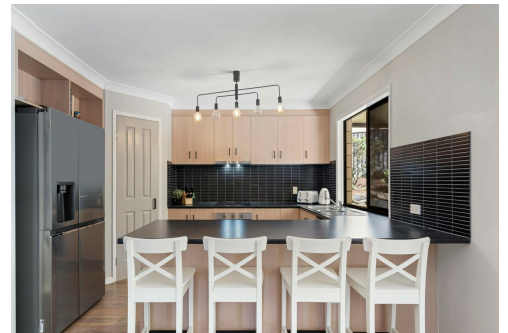
<b>Property ID</b>	1Y16GWH
<b>Property Type</b>	House
<b>Land Area</b>	834 sqm
<b>Including</b>	Ensuite Air Conditioning Pool Dishwasher Outdoor Entertaining Built-in-Robes Fully Fenced

**Sharon Sams 0467 651 456**

New Client Manager - Property Investment Management | [sharon@ljhgc.com.au](mailto:sharon@ljhgc.com.au)

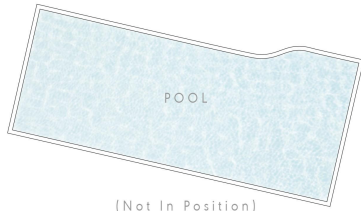
**LJ Hooker Ormeau (07) 5549 4500**

Unit 10 Norfolk Village Shopping Ctr, 170-174 Pascoe Road, ORMEAU QLD 4208  
[ormeau.ljhooker.com.au](http://ormeau.ljhooker.com.au) | [ormeau@ljhgc.com.au](mailto:ormeau@ljhgc.com.au)

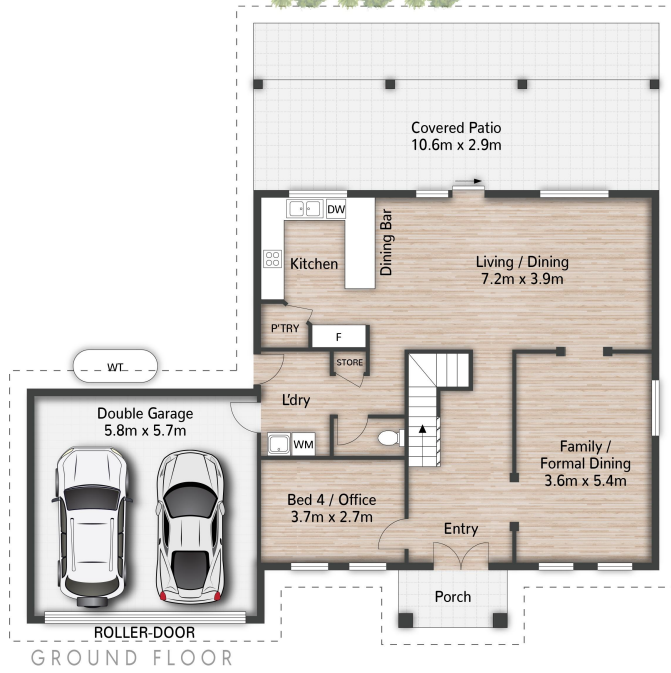


**LJ Hooker Ormeau**  
**(07) 5549 4500**

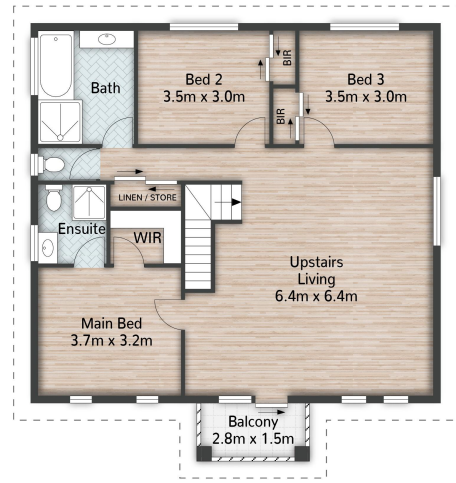
**Disclaimer:** All information contained therein is gathered from relevant third parties sources. We cannot guarantee or give any warranty about the information provided. Interested parties must rely solely on their own enquiries.



(Not In Position)



GROUND FLOOR



FIRST FLOOR