



Ormeau, 3 Edwards Place

SPACIOUS FAMILY HOME WITH LARGE SHED & POOL

This fabulous family home has so much to offer, located in a quiet street with easy access to the M1 & walking distance to the shops and other amenities. The property features;

- * 4 spacious bedrooms, 1 air conditioned
- * Master bedroom with ensuite and access to rear covered entertainment area
- * Open plan air conditioned lounge/dining area plus separate living room
- * Great sized modern kitchen with plenty of storage, bench space & dishwasher
- * Pot belly fireplace for cozy living
- * 3 car lock up shed - 1 auto door, 2 manual (rear roller doors for ventilation purposes) plus double carport
- * 13.3kw solar to reduce energy bills
- * Inground pool
- * Ceiling fans and security screens throughout
- * 2 large covered entertainment areas (front & rear) perfect for entertaining year round
- * Huge fenced yard perfect for kids and pets to play



For Lease
Please Call

View
ljhooker.com.au/1Y81GWH

Contact
Cassie Wealleans
07 5585 7888
cwealleans@ljhg.com.au



Disclaimer: All information contained therein is gathered from relevant third parties sources. We cannot guarantee or give any warranty about the information provided. Interested parties must rely solely on their own enquiries.

LJ Hooker Ormeau
(07) 5549 4500

* Pets considered on application

** ARRANGE AN INSPECTION TIME ONLINE**

** REGISTRATION REQUIRED **

By registering, you will be INSTANTLY informed of any updates, changes or cancellations for your appointment. Please be aware that even though you may be booked in for an inspection, it does sometimes occur that the property may be leased prior to the time and date you have been given. If that occurs, you will receive a text informing you of the cancellation. Once registered, you will receive an email from our agency as to the guidelines of entry. Please ensure you read them and adhere to them strictly. Please view the photos and any visual aids you can access thoroughly to ensure that this is a home you are very interested in before registering. Due to the current situation, open homes are attendance limited, if you are unable to register for an inspection, register your interest and you will be notified when/if another open is scheduled.

** IF YOU DO NOT REGISTER FOR YOUR PRIVATE APPOINTMENT, YOU WILL NOT BE PERMITTED TO ENTER **

Disclaimer: In preparing this information LJ Hooker has used its best endeavours to ensure that the information contained herein is true and accurate, but accept no responsibility and disclaim all liability in respect of any errors, omissions, inaccuracies or misstatements that may occur. Prospective tenants and buyers should make their own enquiries to verify the information contained herein. *On application, pending owner approval.

Photos used in advertising may differ from the current state of the property. We endeavour to use the most up to date photography, however this may not be feasible to protect our current tenants' privacy. Photos may include the use of virtual furniture.

More About this Property

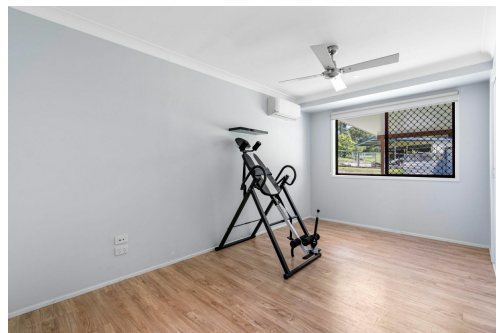
Property ID	1Y81GWH
Property Type	House
Including	Ensuite

Cassie Wealleans 07 5585 7888

Leasing Manager | cwealleans@ljhg.com.au

LJ Hooker Ormeau (07) 5549 4500

Unit 10 Norfolk Village Shopping Ctr, 170-174 Pascoe Road, ORMEAU QLD 4208
ormeau.ljhooker.com.au | ormeau@ljhg.com.au



Disclaimer: All information contained therein is gathered from relevant third parties sources. We cannot guarantee or give any warranty about the information provided. Interested parties must rely solely on their own enquiries.

LJ Hooker Ormeau
(07) 5549 4500