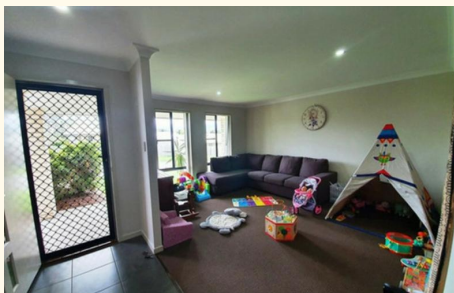




Leased



15 Oliver Place, Ormeau

## Spacious Family Home with a Large Backyard

This generously sized family home offers comfort, convenience, and space for everyone to enjoy. Located just minutes from local shops and amenities, it's perfect for growing families.

### Property Features:

- Open-plan kitchen, living, and dining area
- Separate carpeted family/media room
- Air conditioning in main living area
- Large master bedroom with walk-in robe and private ensuite
- Three additional spacious bedrooms, all with built-in wardrobes
- Family bathroom with separate toilet
- Covered outdoor entertaining area, ideal for gatherings
- Fully fenced backyard-room for a trampoline and swing set
- Double remote-control garage

- **\*ARRANGE AN INSPECTION TIME ONLINE\*\***

By registering, you will be INSTANTLY informed of any updates, changes or cancellations for your appointment. Please be aware that even though you may be booked in for an inspection, it does sometimes occur that the property may be leased prior to the time and date you have been given. If that occurs you will receive a text

4 🚗 2 🚗 2 🚗

### FOR RENT

Please Call

### AGENTS

Kirsty Wheatley  
07 5573 7218  
kwheatley@ljhteam.com.au

### AGENCY

LJ Hooker Pacific Pines | Helensvale  
(07) 5573 2099

All information contained therein is gathered from relevant third parties sources.  
We cannot guarantee or give any warranty about the information provided.  
Interested parties must rely solely on their own enquiries.



informing you of the cancellation.

Registering online will provide you with a 10 minute private viewing. Once registered, you will receive and email from our agency as to the guidelines of entry. Please ensure you read them and adhere to them strictly. Please view the photos and any visual aids you can access thoroughly to ensure that this is a home you are very interested in before registering. Viewings are limited.

- Disclaimer: In preparing this information LJ Hooker has used its best endeavours to ensure that the information contained herein is true and accurate but accept no responsibility and disclaim all liability in respect of any errors, omissions, inaccuracies or misstatements that may occur. Prospective tenants and buyers should make their own enquiries to verify the information contained herein. Photos used in advertising may differ from the current state of the property. We endeavour to use the most up to date photography, however this may not be feasible to protect our current tenants' privacy. Photos may include the use of virtual furniture.

## MORE DETAILS

Property ID                    35QGGMK  
Property Type                House

**Kirsty Wheatley 07 5573 7218**  
Business Development Manager | [kwheatley@ljhteam.com.au](mailto:kwheatley@ljhteam.com.au)

**LJ Hooker Pacific Pines | Helensvale (07) 5573 2099**  
8 Discovery Drive, HELENSVALE QLD 4212  
[pacificpines-helensvale.ljhooker.com.au](http://pacificpines-helensvale.ljhooker.com.au) | [admin@ljhteam.com.au](mailto:admin@ljhteam.com.au)

