

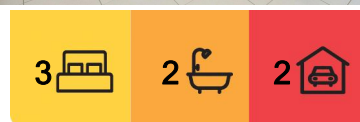


Ormeau Hills, 46 Oakover Avenue

Cute Family Home!

Positioned alongside a leafy, green corridor, there is a superb easy-care design and excellent proximity to amenities. An ideal location embraces a no-fuss lifestyle with a position that is walking distance to parkland and at the door of numerous amenities; schooling, shopping and dining just a short drive away plus the M1, bus and rail ensuring that this location will always be in demand.

- 313m2 block
- Contemporary single level with easy-care appeal
- Three air-conditioned and built-in bedrooms; master including walk-in robe and ensuite
- Open-plan, air-conditioned lounge and dining on tiled floors
- Modern kitchen with good storage, stainless appliances and stone benches
- Covered rear alfresco with fenced, low-maintenance surrounds
- Contemporary family bathroom with good vanity storage and separate bath
- Separate laundry



For Lease
Please Call

View
ljhooker.com.au/1Y8DGWH

Contact
Cassie Wealleans
07 5585 7888
cwealleans@ljhg.com.au



LJ Hooker Ormeau
(07) 5549 4500

Disclaimer: All information contained therein is gathered from relevant third parties sources. We cannot guarantee or give any warranty about the information provided. Interested parties must rely solely on their own enquiries.

- Solar electricity/mains gas connection/security screens
- Double remote garage
- Opposite green corridor plus close to shops, schools and parkland

**** ARRANGE AN INSPECTION TIME ONLINE****

**** REGISTRATION REQUIRED ****

By registering, you will be INSTANTLY informed of any updates, changes or cancellations for your appointment. Please be aware that even though you may be booked in for an inspection, it does sometimes occur that the property may be leased prior to the time and date you have been given. If that occurs, you will receive a text informing you of the cancellation. Once registered, you will receive and email from our agency as to the guidelines of entry. Please ensure you read them and adhere to them strictly. Please view the photos and any visual aids you can access thoroughly to ensure that this is a home you are very interested in before registering. Due to the current situation, open homes are attendance limited, if you are unable to register for an inspection, register your interest and you will be notified when/if another open is scheduled.

**** IF YOU DO NOT REGISTER FOR YOUR PRIVATE APPOINTMENT, YOU WILL NOT BE PERMITTED TO ENTER ****

Disclaimer: In preparing this information LJ Hooker has used its best endeavours to ensure that the information contained herein is true and accurate, but accept no responsibility and disclaim all liability in respect of any errors, omissions, inaccuracies or misstatements that may occur. Prospective tenants and buyers should make their own enquiries to verify the information contained herein. *On application, pending owner approval.

Photos used in advertising may differ from the current state of the property. We endeavour to use the most up to date photography, however this may not be feasible to protect our current tenants' privacy. Photos may include the use of virtual furniture.

More About this Property

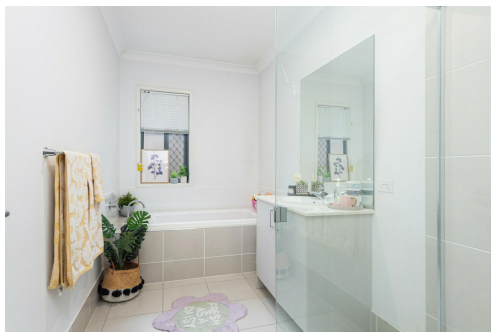
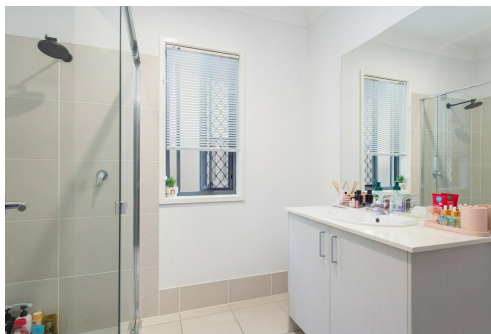
Property ID	1Y8DGWH
Property Type	House
Land Area	313 sqm
Including	Ensuite Air Conditioning Outdoor Entertaining Fully Fenced Solar Panels

Cassie Wealleans 07 5585 7888
 Leasing Manager | cwealleans@ljhg.com.au

LJ Hooker Ormeau (07) 5549 4500
 Unit 10 Norfolk Village Shopping Ctr, 170-174 Pascoe Road, ORMEAU QLD 4208
 ormeau.ljhooker.com.au | ormeau@ljhg.com.au



Disclaimer: All information contained therein is gathered from relevant third parties sources. We cannot guarantee or give any warranty about the information provided. Interested parties must rely solely on their own enquiries.



LJ Hooker Ormeau
(07) 5549 4500



46 Oakover Avenue ORMEAU HILLS

3 | 2 | 2 | 170m²

LJ Hooker

All dimensions are approximate; they are subject to errors and inaccuracies and no liability will be accepted.
Plans are shown for marketing purposes only.