

Officer, 20 Ambleside Way

Modern, Stylish, New & Waiting For You!

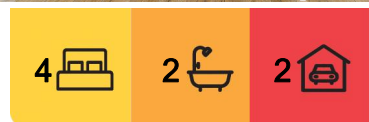
This brand new, modern two story home will tick all your boxes as the perfect rental!
Positioned in the prestigious Timbertop estate with only a short distance to local schools, child care centre, medical facilities, shops, parks, walking trails and M1 access.

Boasting -

- An eye catching colour scheme,
- Stone benchtops throughout,
- Ducted heating and evaporative cooling for all year round comfort,
- Ground floor -
- Floorboards,
- Formal living area,
- Powder room,
- Spacious laundry,
- Understairs case storage,
- Open plan kitchen, dining and living space,



Disclaimer: All information contained therein is gathered from relevant third parties sources.
We cannot guarantee or give any warranty about the information provided. Interested parties must rely solely on their own enquiries.



For Lease
Please Call

View
ljohnston.com.au/1NWEFC9

Contact
Adeline Johnston
ajohnston.pakenham@ljohnston.com.au

LJ Hooker Pakenham
(03) 5943 8000

Kitchen boasting 120ml stainless steel cooking, dishwasher, walk in pantry and plenty of space for the home chef,
 Alfresco,
 Double car garage with remote, internal and rear access,
 Low maintenance enclosed yard,
 First floor -
 Rumpus room with walk in linen,
 Master bedroom with immense walk in robe, ensuite complete with double vanity, oversized shower and separate toilet,
 Two bedrooms with built in robes and mirrored sliding doors,
 One bedroom with walk in robe,
 Family bathroom with bathtub.
 This property is waiting for it's very first family to move into it!

More About this Property

Property ID	1NWEFC9
Property Type	House
Land Area	350 sqm
Including	Ensuite Air Conditioning Ducted Heating Evaporative Cooling Toilets (3) Dishwasher Built-in-Robes Secure Parking Fully Fenced Remote Garage

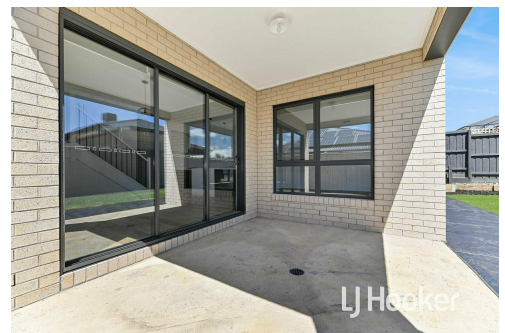
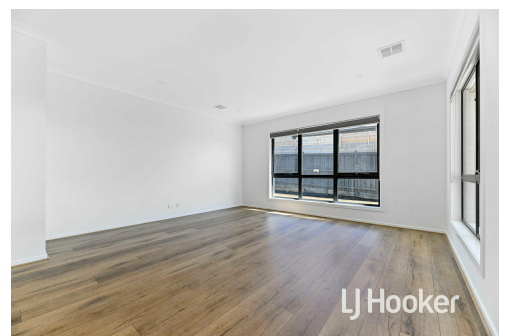
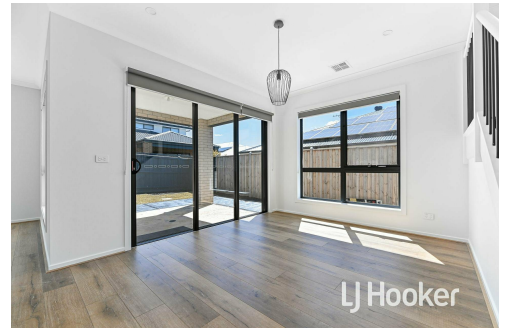
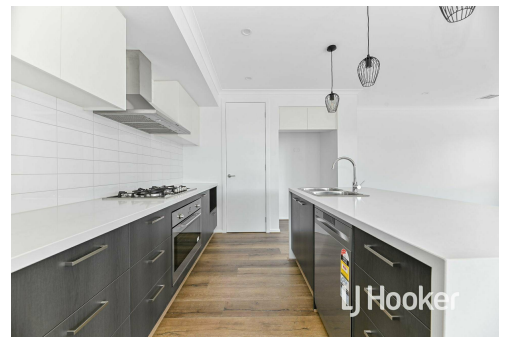
Adeline Johnston

Property Investment Manager | ajohnston.pakenham@ljhooker.com.au

LJ Hooker Pakenham (03) 5943 8000

45 John Street, PAKENHAM VIC 3810

pakenham@ljhooker.com.au | pakenham@ljhooker.com.au



Disclaimer: All information contained therein is gathered from relevant third parties sources.
 We cannot guarantee or give any warranty about the information provided. Interested parties must rely solely on their own enquiries.

LJ Hooker Pakenham
(03) 5943 8000



This drawing is for illustrative purposes only and while every effort has been made to maintain accuracy, prospective purchasers should check all information