

17 Tynte Court, North Adelaide

## CONTEMPORARY LIVING & URBAN STYLE

To register for an open inspection, simply click 'Enquire' or 'Request an Inspection'.




We'll then send you an email to register your attendance for viewing and provide further details about the property and application process. Registration will ensure you are advised on any new or updated inspection times.

### ABOUT THE PROPERTY

Welcome to 17 Tynte Court, North Adelaide

Located off Tynte Street in the beautiful location of North Adelaide, this 2-bedroom townhouse hosts the kind of welcome a city-seeking tenant would truly value.

Offering a secure carport and courtyard entry, this 1994 built - residence home is fresh from an interior repaint, and carries a classic feel featuring living, dining, and kitchen on the ground floor with a spiral staircase leading upstairs to the bedrooms and main bathroom.

2  1  1 

**FOR RENT**  
\$610 per week

**VIEW**  
By Appointment

**AGENTS**  
Amanda Malius  
amanda@ljhgleneighbrighton.com.au

**AGENCY**  
LJ Hooker Glenelg | Brighton  
(08) 8294 6000

All information contained therein is gathered from relevant third parties sources. We cannot guarantee or give any warranty about the information provided. Interested parties must rely solely on their own enquiries.

 **LJ Hooker**

Features of this property include

- Kitchen with gas cooktop and separate wall oven plus dishwasher
- Open plan living and dining area located downstairs
- Two bedrooms, Main bedroom with French doors to a large balcony and Built in robes
- Large bathroom with incorporated laundry facilities.

Given your central North Adelaide axis, secure the car under cover and set out on foot to enjoy the spoils this ideal locale provides.

With O'Connell Street on your doorstep there is the added extra of enjoying the retail, café, and restaurant scene, The Oxford and The Royal Oak Hotels to North Adelaide Village for Foodland groceries and gourmet.

Be quick, this property won't last long!

LEASE TERM: 12 months

AVAILABLE FROM: 10/07/2026

WATER CHARGES: Tenant to pay supply and water use

PET POLICY: Sorry no pets permitted as per Strata rules

INSPECTION: Register to inspect

#### APPLYING FOR THIS PROPERTY

Please note applications will not be processed until:

- > The property has been viewed in person or someone has viewed it on your behalf
- > All occupants over 18 years have completed the application form
- > Photo ID has been provided
- > Proof of Income (Pay slip/Bank balance/Centrelink) has been provided

#### TO INSPECT THIS HOME

Click the 'Enquire' or 'Request an Inspection' button to register for our upcoming open inspections. We manage our enquiries through Tenant Options and recommend registering your interest to stay updated throughout every step of the leasing process.

All information provided has been obtained from sources we believe to be accurate, however, we cannot guarantee the information is accurate and we accept no liability for any errors or omissions (including but not limited to a property's land size, floor plans and size, building age and condition) Interested parties should make their own enquiries and obtain their own legal advice.

RLA 277721

## MORE DETAILS

Property ID MEKGW0  
Property Type House  
Including Air Conditioning  
Toilets (1)  
Courtyard  
Balcony  
Dishwasher  
Built-in-Robes  
Secure Parking  
Fully Fenced  
Remote Garage

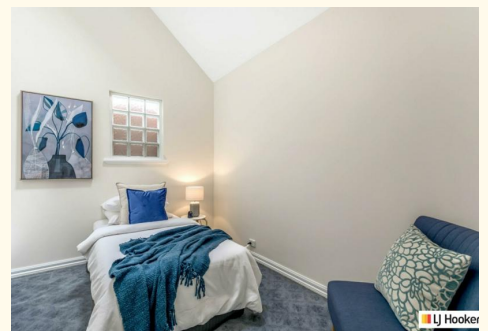
### Amanda Malius

Property Investment Specialist | [amanda@ljhglenelgbrighton.com.au](mailto:amanda@ljhglenelgbrighton.com.au)

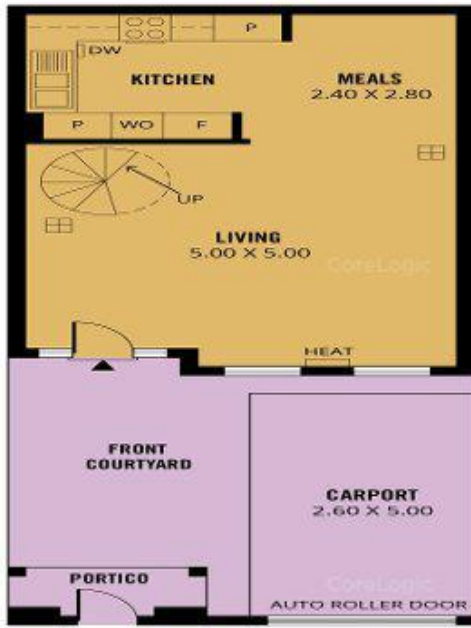
### LJ Hooker Glenelg | Brighton (08) 8294 6000

76 Oaklands Road, SOMERTON PARK SA 5044

[glenelgbrighton.ljhooker.com.au](http://glenelgbrighton.ljhooker.com.au) | [rebecca@ljhglenelgbrighton.com.au](mailto:rebecca@ljhglenelgbrighton.com.au)



All information contained therein is gathered from relevant third parties sources.  
We cannot guarantee or give any warranty about the information provided.  
Interested parties must rely solely on their own enquiries.



**122m<sup>2</sup>**  
TOTAL

**89m<sup>2</sup>**  
Living

**14m<sup>2</sup>**  
Front  
Courtyard

**13m<sup>2</sup>**  
Carport

**3m<sup>2</sup>**  
Portico

**3m<sup>2</sup>**  
**LJ Hooker**

Scale in metres. This drawing is for illustration purposes only. All measurements are approximate and details intended to be relied upon should be independently verified. Produced by CoreLogic  
 Nov 20