



Mon 12/05/2025 17:01



Mon 26/05/2025 10:42



Mon 26/05/2025 10:42



Mon 26/05/2025 10:41

## Ngongotaha, 17 Landscape Drive

3 bed large section

This home offers excellent garaging and a large, fully fenced section. Inside, you'll find three bedrooms, a bathroom with a separate toilet, and a separate laundry. The open-plan kitchen, dining, and lounge areas create an easy flow, leading out onto a beautiful veranda that wraps around the sunny sides of the home - perfect for relaxing or entertaining outdoors.

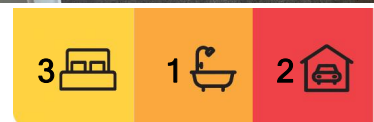
The property is surrounded by mature trees and boasts a fully fenced yard, providing a secure and private environment ideal for children to play freely. Please note, however, that this property is not suitable for dogs.

Located in the sought-after Ngongotaha area, close to shops, schools, and public transport, it's a fantastic place to call home.

Rent is \$600 per week, and the property will be available from 26 May 2025.



**Disclaimer:** All information contained therein is gathered from relevant third parties sources. We cannot guarantee or give any warranty about the information provided. Interested parties must rely solely on their own enquiries.



**For Lease**  
Please Call

**View**  
[l.jhooker.co.nz/Q6HZJ](https://l.jhooker.co.nz/Q6HZJ)

**Contact**  
**Sam Denize**  
0277368647  
[sam.denize@l.jhooker.co.nz](mailto:sam.denize@l.jhooker.co.nz)

**LJ Hooker Rotorua**  
**07 347 1665**  
Volcanic Realty Limited

To apply, please complete the application form and share a little about yourselves.  
Viewings will be scheduled once applications are received.

Feel free to drive by to get a sense of the property, but please respect the current occupants by not entering the premises without an arranged viewing.

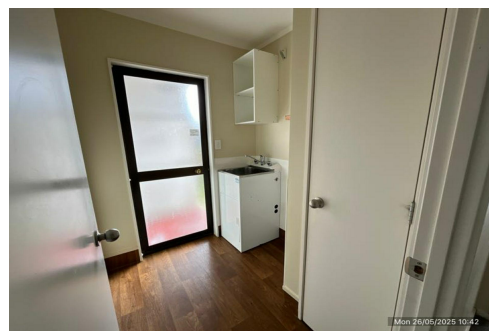
Before moving in, we require first week's rent and a bond equivalent to four weeks' rent.

## More About this Property

Property ID	Q6HZJ
Property Type	House
Land Area	727 sqm
Licensed Real Estate Agents (REAA2008)	

**Sam Denize 0277368647**  
Property Manager | [sam.denize@ljhooker.co.nz](mailto:sam.denize@ljhooker.co.nz)

**LJ Hooker Rotorua 07 347 1665**  
Volcanic Realty Limited  
1284 Eruera Street, ROTORUA NZ 3010  
[rotorua@ljhooker.co.nz](mailto:rotorua@ljhooker.co.nz) | [rotorua@ljhooker.co.nz](mailto:rotorua@ljhooker.co.nz)



**Disclaimer:** All information contained therein is gathered from relevant third parties sources.  
We cannot guarantee or give any warranty about the information provided. Interested parties must rely solely on their own enquiries.

**LJ Hooker Rotorua**  
**07 347 1665**  
Volcanic Realty Limited