



Newport, 109 Prince Alfred Parade

Family Home with Perfect In-law Accommodation or Huge Home Office

Nestled in a picture perfect location overlooking Florence Park and Pittwater is this recently renovated, well presented family home. Offering optional in-law accommodation, this home is perfect for families, or those who need of a large separate work/office space. This beautiful home offers light filled indoor and outdoor living areas and is situated meters from Florence Park...it won't last long.

Features include:

- * Expansive air-conditioned lounge/dining room opening onto entertaining deck with retractable awning
- * Freshly painted timber kitchen with brand new appliances.
- * 4 spacious bedrooms with built in robes and ceiling fans
- * Downstairs area suitable for in-law accommodation/teenagers retreat or huge home office with separate entry



Disclaimer: All information contained therein is gathered from relevant third parties sources. We cannot guarantee or give any warranty about the information provided. Interested parties must rely solely on their own enquiries.

4

2

2

For Lease
Please Call

View
ljhooker.com.au/2T92F6K

Contact
Kelli Church
0419 019 062
rentals2@ljhmv.com.au
Christopher Nelson
0418 228 613
rentals3@ljhmv.com.au

LJ Hooker Mona Vale
(02) 9979 8000

- * Main bedroom with Pittwater views, balcony, ensuite bathroom with large bath
- * Full bathroom with separate shower/bath
- * Internal laundry with loads of storage
- * Utility room with extra toilet
- * Double carport and off-street parking
- * Lovely, terraced garden and lawn with maintenance included
- * Pets considered on application

APPLICATIONS: are via T-App <https://t-app.com.au/ljhmonavale>

1Form applications are no longer accepted

Disclaimer:

All information contained herewith, including but not limited to the general property description, price and the address, is provided to LJ Hooker Mona Vale by third parties. We have obtained this information from sources we believe to be reliable; however, we cannot guarantee its accuracy. The information contained herewith should not be relied upon and you should make your own enquiries and seek advice in respect of this property or any property on this website.

More About this Property

Property ID	2T92F6K
Property Type	House
Land Area	1036 sqm

Kelli Church 0419 019 062

Property Investment Manager | rentals2@ljhmv.com.au

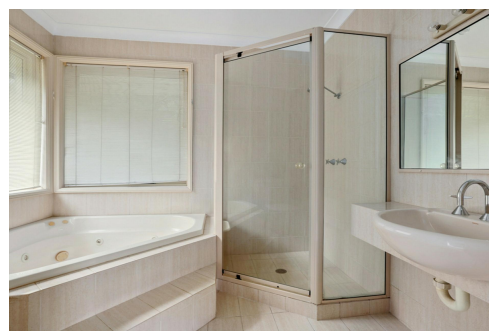
Christopher Nelson 0418 228 613

Property Investment Manager | rentals3@ljhmv.com.au

LJ Hooker Mona Vale (02) 9979 8000

3/18 Bungan Street, MONA VALE NSW 2103

monavale.ljhooker.com.au | monavale@ljhmv.com.au



Disclaimer: All information contained therein is gathered from relevant third parties sources. We cannot guarantee or give any warranty about the information provided. Interested parties must rely solely on their own enquiries.

LJ Hooker Mona Vale
(02) 9979 8000