



New Farm, 6 Patterson Street

Renovated Cottage! Must See, will go quick!

All enquiries to Peter 0407 696 349.

This 2 bedroom workers cottage home is nestled in the ever so green New Farm rally almost on Teneriffe hill.

This home would be perfect for a couple, or a couple of friends and is in a fantastic location.

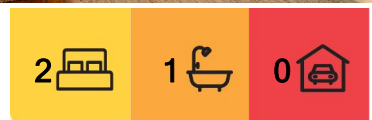
This is your opportunity as this house rarely is available.

Close to the groovy cafes theatres and boutiques of James Street but without any parking problems.

A open floor plan comprises two bedrooms plus deck, large combined living and dining,



Disclaimer: All information contained therein is gathered from relevant third parties sources. We cannot guarantee or give any warranty about the information provided. Interested parties must rely solely on their own enquiries.



For Lease
Please Call

View
ljhooker.com.au/2AHHXX

Contact
LJ Hooker Clayfield Property Management

LJ Hooker Clayfield
(07) 3262 2434

and a great sized kitchen area that opens to the rear garden area.

Features Include:

- + 2 Double Bedrooms
- + State of the Art Architect designed bathroom and Kitchen with all European appliances
- + Open Plan Lounge & Dining Room
- + Large Eat-in Kitchen (with gas cooktop)
- + Internal Laundry
- + Off street parking
- + Large Front Veranda and rear deck with cool breezes off the river.
- + Backyard (fully fenced)

Rent \$725 pw, water charges included.

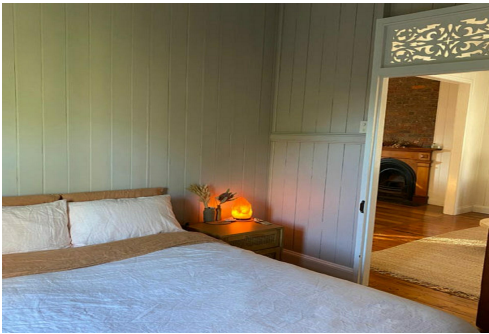
Ph. Peter 0407 696 349 to book your inspection.

More About this Property

Property ID	2AHHXX
Property Type	House
Including	Balcony Deck Fully Fenced

LJ Hooker Clayfield Property Management
Property Management

LJ Hooker Clayfield (07) 3262 2434
723 Sandgate Road, CLAYFIELD QLD 4011
clayfield.ljhooker.com.au | admin@ljhclayfield.com.au



Disclaimer: All information contained therein is gathered from relevant third parties sources.
We cannot guarantee or give any warranty about the information provided. Interested parties must rely solely on their own enquiries.

LJ Hooker Clayfield
(07) 3262 2434