

New Farm, 3/55 Oxlade Drive

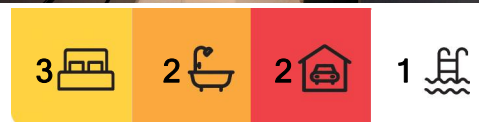
Luxury Living with River Views in the Heart of New Farm!

Rent will be \$1800 per week and increased to \$1900 in November 2024!

OPEN TO SHORT OR LONG TERM LEASE!

Executive living at its finest - enter through the foyer off the carpark - you'll have 2 spaces side by side so no problem with parking - Wander past the heated inground pool, perfect for exercising or simply splashing about on the weekends. Opposite the pool you will find a Private dining area and Theatre which you will have access to for private use. Take the lift to the second level where you'll be one of only 2 apartments.

Spread over two levels internally, entry is from the upper level where white oak engineered flooring through the living area allows for a chic low maintenance lifestyle. Check out the kitchen where a suite of Gaggenau ovens is awaiting the chef inside you to be unleashed.



For Lease
Please Call

View
ljhooker.com.au/2C3HXX

Contact
LJ Hooker Clayfield Property Management



Disclaimer: All information contained therein is gathered from relevant third parties sources. We cannot guarantee or give any warranty about the information provided. Interested parties must rely solely on their own enquiries.

LJ Hooker Clayfield
(07) 3262 2434

The Unit offers the following...

- * Open Plan Kitchen - 4 Ovens + Butlers Pantry
- * 5 Burner Gas Stove top ring
- * Ducted Aircon throughout the property
- * Master Bedroom with huge walk in robe
- * Ensuite Bathroom with Double Vanity, bath and separate shower - Porcelain wall and vanity with mirrored storage cabinets
- * Large Lounge/Dining which leads to side balcony with River Views
- * Powder Room off the lounge/dining area for guests
- * Remote Control Blinds to the Master Bedroom and Lounge
- * 2 further large bedrooms on the lower level with private balcony and built ins
- * Main Bathroom to the lower level
- * Study
- * Lots of Storage on lower level and your own Storage room on the ground floor
- * Laundry storage
- * Shared Solar Heated Pool
- * Private Dining Room
- * Private Cinema Room
- * Rooftop Zen Garden
- * Lift access
- * First & Second Floor Position
- * Access to the River Walk opposite the Complex

If you're looking for a lifestyle that will have you strolling the river walk, wandering New Farm Park, hopping on a ferry to the City or simply sampling some of the local fare, look no further.

Available 13/09/24 - Call now for a private inspection but be warned...step inside this amazing apartment and you'll never want to leave!

You Must Register to attend a viewing!

Michelle Hartshorn - LJ Hooker Clayfield
07 3262 2434



LJ Hooker Clayfield
(07) 3262 2434

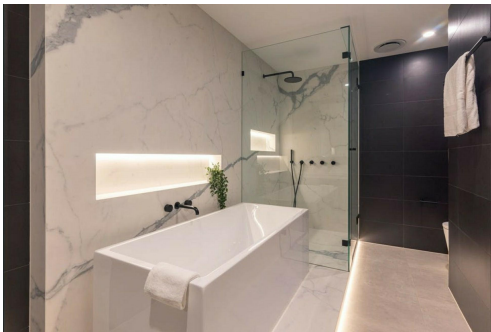
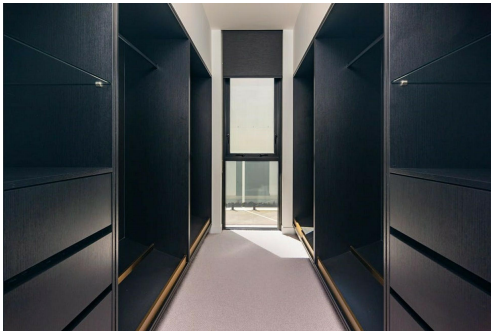
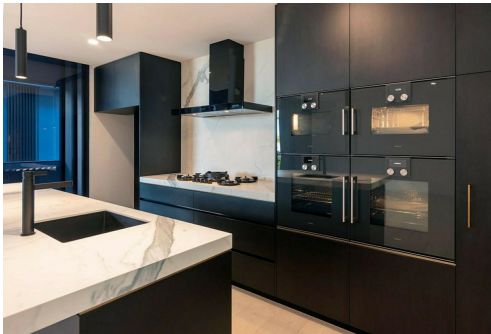
Disclaimer: All information contained therein is gathered from relevant third parties sources. We cannot guarantee or give any warranty about the information provided. Interested parties must rely solely on their own enquiries.

More About this Property

Property ID	2C3HXX
Property Type	Apartment
Including	Study Air Conditioning Ducted Cooling Ducted Heating Toilets (1) Alarm Intercom Pool Courtyard Balcony Dishwasher Outdoor Entertaining Floorboards Built-in-Robes Secure Parking Remote Garage

LJ Hooker Clayfield Property Management
Property Management

LJ Hooker Clayfield (07) 3262 2434
723 Sandgate Road, CLAYFIELD QLD 4011
clayfield.ljhooker.com.au | admin@ljhclayfield.com.au



Disclaimer: All information contained therein is gathered from relevant third parties sources.
We cannot guarantee or give any warranty about the information provided. Interested parties must rely solely on their own enquiries.

LJ Hooker Clayfield
(07) 3262 2434