



Narre Warren South, 22 Marathon Way

STUNNING BRAND NEW HOME!

This stunning brand new 3-bedroom family home is perfect for those seeking comfort and convenience.

Key Features:

- Master Bedroom: Includes an ensuite and walk-in robe, plus split system air conditioning.
- Bedrooms 2 & 3: Equipped with pane heaters for added warmth.
- Modern Kitchen: Features a gas cooktop, 600mm under-bench oven, dishwasher, pantry, and stylish stone benchtops.
- Living Area: Enjoy the comfort of timber floors, downlights, roller blinds, and a split system air conditioner.
- Yard & Garage: Enclosed backyard and a single garage with internal access for convenience.

This home has it all-comfort, style, and practical features to make everyday living a breeze!



Disclaimer: All information contained therein is gathered from relevant third parties sources. We cannot guarantee or give any warranty about the information provided. Interested parties must rely solely on their own enquiries.



For Lease
Please Call

View
ljhooker.com.au/47WRSFHE

Contact
Michelle Newson
03 9702 8388
michelle.newson@ljhcasey.com.au

LJ Hooker Hampton Park
(03) 9702 8388

RENT PER CALENDAR MONTH = \$2,477.00

BOND = \$2,477.00

More About this Property

Property ID	47WRSFHE
Property Type	House
Including	Ensuite Air Conditioning

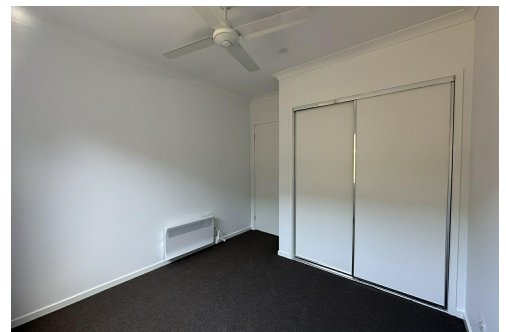
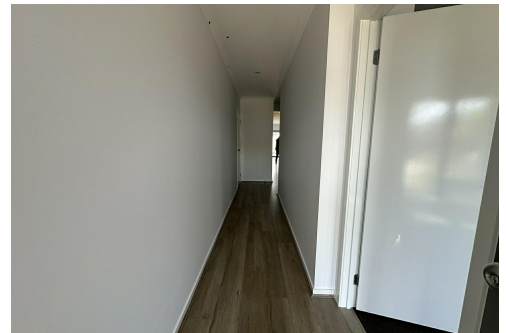
Michelle Newson 03 9702 8388

Business Development Manager | michelle.newson@ljhcasey.com.au

LJ Hooker Hampton Park (03) 9702 8388

Shop 20, Hampton Park Shopping Centre, 166 Somerville Road, HAMPTON PARK VIC 3976

hamptonpark.ljhooker.com.au | john.deo@ljhcasey.com.au



Disclaimer: All information contained therein is gathered from relevant third parties sources.

We cannot guarantee or give any warranty about the information provided. Interested parties must rely solely on their own enquiries.

**LJ Hooker Hampton Park
(03) 9702 8388**