

Mount Waverley, 3/4 Lee Avenue

Spacious 3-Bedroom Townhouse in Prime Mount Waverley School Zone - Available for rent!

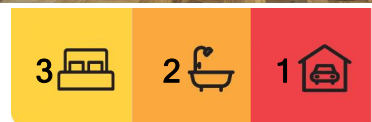
*Fully Furnished Option is Available at Extra Cost

Situated within the Mount Waverley Secondary College zone, close to prestigious schools such as Huntingtower School, Avila College, Wesley College (Glen Waverley Campus), and Mount Waverley Primary School. Shopping and dining are just minutes away at The Glen Shopping Centre, Mount Waverley Village, and Pinewood Shopping Village, with the iconic Chadstone Shopping Centre also within easy reach. Syndal train station and the Monash Freeway provide easy access to the CBD and surrounding areas.

This townhouse boasts 3 bedrooms, 2 modern bathrooms, 3 toilets, good sized laundry, sunny lounge, spacious family room, modern kitchen / meals area is well equipped with stone with benchtops, stainless steel appliances, dishwasher, alfresco out-door deck, alarm and remote single garage.



Disclaimer: All information contained therein is gathered from relevant third parties sources. We cannot guarantee or give any warranty about the information provided. Interested parties must rely solely on their own enquiries.



For Lease
Please Call

View
ljhooker.com.au/N91HC2

LJ Hooker City Residential
(03) 9600 2166

- Main Bedroom with ensuite and WIR downstairs
- 2 further bedrooms with BIRs upstairs
- Ducted Heating
- 3 Air Conditioning
- Electronic doorbell
- Low maintenance for the garden

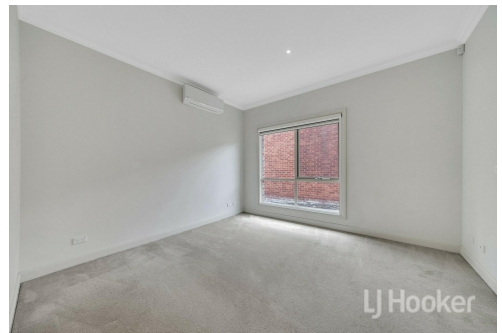
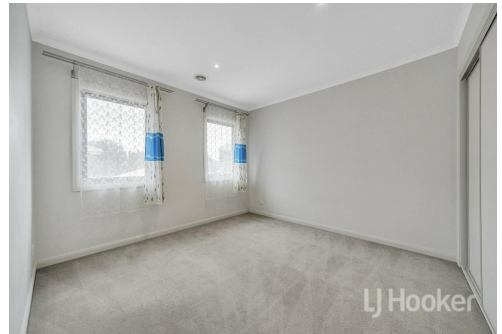
*****Arranging an inspection is easy!*****

To book a time to inspect, simply click on the Book an Inspection Time button OR click Contact Agent, email through your details so we can reply with available appointment times for you to register to inspect. By registering, you will be INSTANTLY informed of any updates, changes or cancellations for your appointment.

More About this Property

Property ID	N91HC2
Property Type	Townhouse

LJ Hooker City Residential (03) 9600 2166
 Upper Ground Floor, 439-445 Lonsdale St, MELBOURNE VIC 3000
cityresmelbourne.ljhooker.com.au | cityresmelbourne@ljhooker.com.au



Disclaimer: All information contained therein is gathered from relevant third parties sources. We cannot guarantee or give any warranty about the information provided. Interested parties must rely solely on their own enquiries.

LJ Hooker City Residential
(03) 9600 2166