

Mount Nelson, 14 Lachlan Drive

Family home

Ideal if you are looking for a home on a short term option of 6 months.

14 Lachlan Drive Mount Nelson offers space and privacy for all the family.

5 Generous Bedrooms: Ample space for the whole family to enjoy privacy and comfort.

2 easy access Bathrooms: Conveniently designed for busy family life.

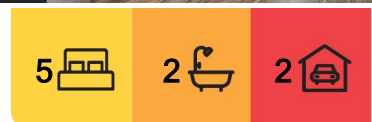
Air Conditioning: Stay cool during summer and cosy in winter.

Expansive Garden: Perfect for children to play, family gatherings, or to create a productive garden

Stunning Water Views: Enjoy picturesque sunsets and tranquil water scenes from your home.

Breathtaking Mountain Views: Embrace the beauty of nature right from your living room.

Land Area: 669 sqm, providing plenty of room for outdoor activities and potential landscaping.



For Lease
Please Call

View
ljhooker.com.au/5XDDFCS

Contact
Raimo Lavia
(03) 6272 8177
rlavia@ljhookerpinnacle.com



Disclaimer: All information contained therein is gathered from relevant third parties sources.
We cannot guarantee or give any warranty about the information provided. Interested parties must rely solely on their own enquiries.

LJ Hooker Pinnacle Property
(03) 6272 8177

Register online to be notified when the next viewing time will be conducted.

Property is available now for a 6 month lease

More About this Property

Property ID	5XDDFCS
Property Type	House
Including	Toilets (2)

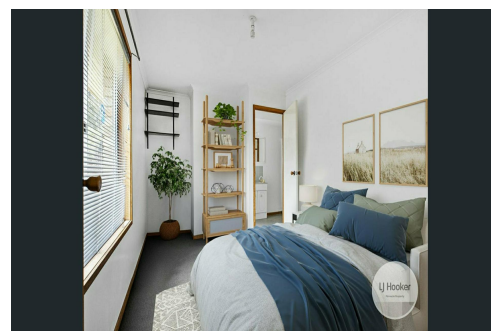
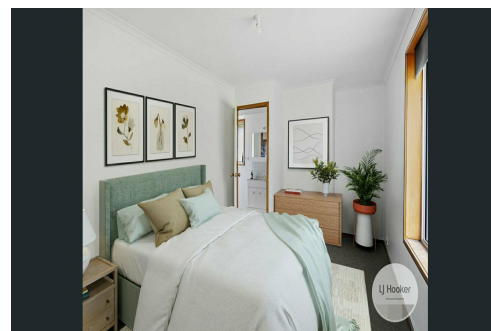
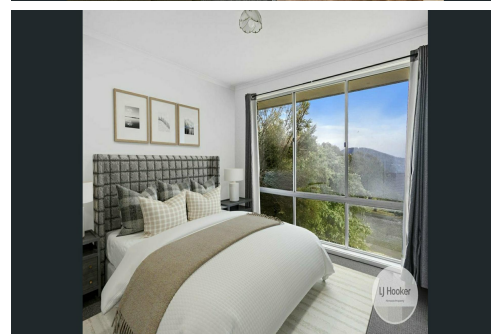
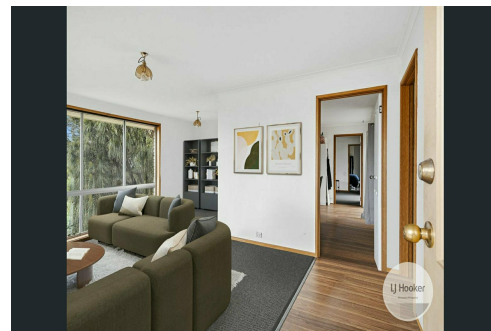
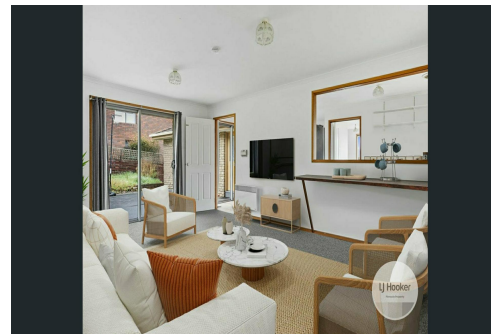
Raimo Lavia (03) 6272 8177

Property Investment Manager | rlavia@ljhookerpinnacle.com

LJ Hooker Pinnacle Property (03) 6272 8177

402 Main Road, GLENORCHY TAS 7010

pinnacleproperty.ljhooker.com.au | hello@ljhookerpinnacle.com



Disclaimer: All information contained therein is gathered from relevant third parties sources.
We cannot guarantee or give any warranty about the information provided. Interested parties must rely solely on their own enquiries.

LJ Hooker Pinnacle Property
(03) 6272 8177