

LEASED



Mosgiel, A/13 Maple Grove

Sunny, spacious and sweet!

To book a viewing or view our other listings copy and paste this link to your browser** - <https://bookme.tenant.co.nz/tps1484>

This very comfortable, contemporary three bedroom townhouse would suit a couple or small family. With pleasant neutral decor throughout and spacious open plan living, its ideal for easy living. The toilet and laundry are separate, while the bathroom offers a separate bath and shower.

The three bedrooms (two double, one single) are spacious and have wardrobes. You will also find an internal access single garage with additional off street car parking and an easy to care for section. There is also ample storage sheds for your tools and lovely sunny outdoor living spaces.

With sun flowing in every angle the interior is lovely and light and there are new drapes

3 

1 

2 

For Lease
Please Call

View
ljhooker.co.nz/3PP2GDS

Contact
Nathan Dickson
027 214 7265
nathan@ljhdunedin.co.nz

and blinds being installed. Potter around the garden, lock and leave to go on weekend adventures or venture into the Mosgiel shops, this home caters to everyone. All this located in a well kept cul-de-sac in a quiet area.

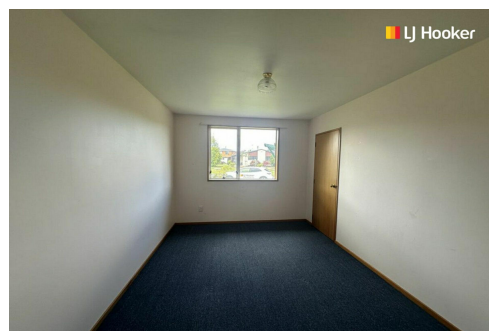
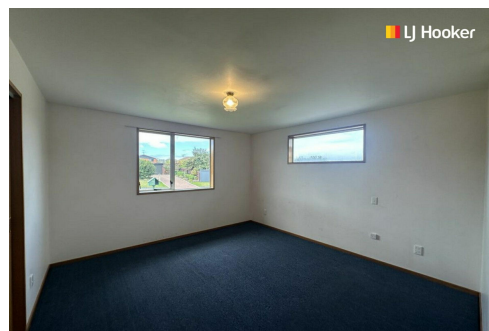
More About this Property

Property ID	3PP2GDS
Property Type	House
Including	Toilets (1) Courtyard Outdoor Entertaining Built-in-Robes Remote Garage

Licensed Real Estate Agents (REAA2008)

Nathan Dickson 027 214 7265
Leasing Agent | nathan@ljhdunedin.co.nz

LJ Hooker Dunedin (03) 470 1370
Wayne Graham Realty Ltd
63 Musselburgh Rise, DUNEDIN 9013
dunedin.ljhooker.co.nz | dunedin@ljhdunedin.co.nz



Disclaimer: All information contained therein is gathered from relevant third parties sources.
We cannot guarantee or give any warranty about the information provided. Interested parties must rely solely on their own enquiries.

LJ Hooker Dunedin
(03) 470 1370
Wayne Graham Realty Ltd