

## Middle Ridge, 8 Elvery Court

Excellent Large Family Home With New Carpet & Paint Throughout!

Step into this brilliant four-bedroom home, designed for comfort, style, and modern living. Perfectly tailored for families or entertainers, this gem offers:

- Four spacious bedrooms with ample natural light —perfect for growing families or hosting guests.
- Two modern bathrooms, including a luxurious master ensuite for your private retreat.
- Two separate living areas, ideal for relaxing or entertaining —a perfect mix of space and versatility.
- A double lock-up garage, ensuring your vehicles and belongings are secure.
- Security screens throughout, offering peace of mind and year-round comfort.
- Low-maintenance living, with thoughtfully designed spaces inside and out.

This Property is full water compliant.

4 

2 

2 

**For Lease**  
Please Call

**View**  
[ljhooker.com.au/1YYCF4W](https://ljhooker.com.au/1YYCF4W)



**Disclaimer:** All information contained therein is gathered from relevant third parties sources. We cannot guarantee or give any warranty about the information provided. Interested parties must rely solely on their own enquiries.

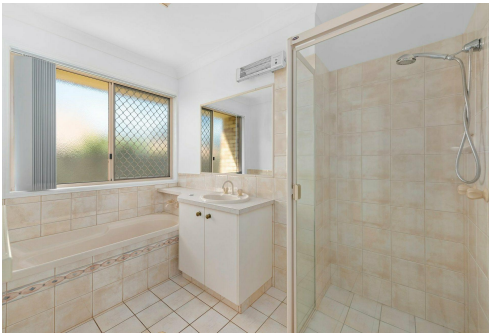
**LJ Hooker Toowoomba**  
**(07) 4688 2222**

Located in a sought-after neighborhood, this home is just minutes from schools, shops, and parks. Don't miss your chance to secure this incredible property —it won't last long!

## More About this Property

Property ID	1YYCF4W
Property Type	House
Land Area	659 sqm

**LJ Hooker Toowoomba (07) 4688 2222**  
Level 1, 677-683 Ruthven Street, TOOWOOMBA QLD 4350  
[toowoomba.ljhooker.com.au](http://toowoomba.ljhooker.com.au) | [toowoomba@ljht.com.au](mailto:toowoomba@ljht.com.au)



**Disclaimer:** All information contained therein is gathered from relevant third parties sources. We cannot guarantee or give any warranty about the information provided. Interested parties must rely solely on their own enquiries.

**LJ Hooker Toowoomba**  
**(07) 4688 2222**