

## Merrylands, 55 Heath Street

Leased



**For Lease**  
Please Call

**View**  
[ljhooker.com.au/2FDYF9E](http://ljhooker.com.au/2FDYF9E)

- \* 3 generously sized bedrooms, with a walk-in robe and a modern ensuite.
- \* Separate lounge and dining rooms.
- \* Entertaining deck and outdoor dining.
- \* Spa bath and a downstairs powder room.
- \* Double garage with internal access, alarm system.
- \* Zoned ducted air conditioning.
- \* Walking distance of Stockland Merrylands and Merrylands Park.
- \* Close to Westfield Parramatta, city transport, and major roads.



**Disclaimer:** All information contained therein is gathered from relevant third parties sources. We cannot guarantee or give any warranty about the information provided. Interested parties must rely solely on their own enquiries.

**LJ Hooker Parramatta | Granville |  
Guildford | Merrylands  
(02) 9637 8555**

## More About this Property

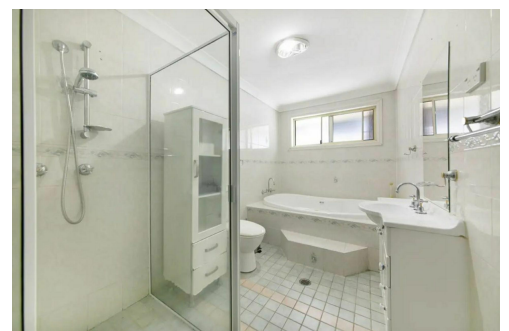
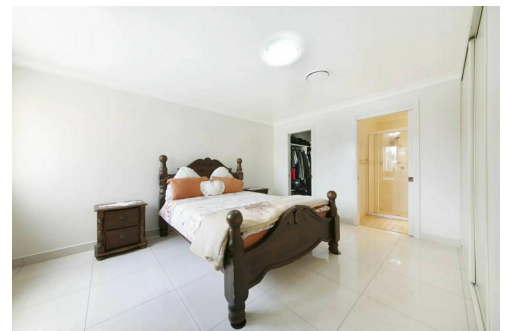
**Property ID** 2FDYF9E

**Property Type** House

**LJ Hooker Parramatta | Granville | Guildford | Merrylands (02) 9637 8555**

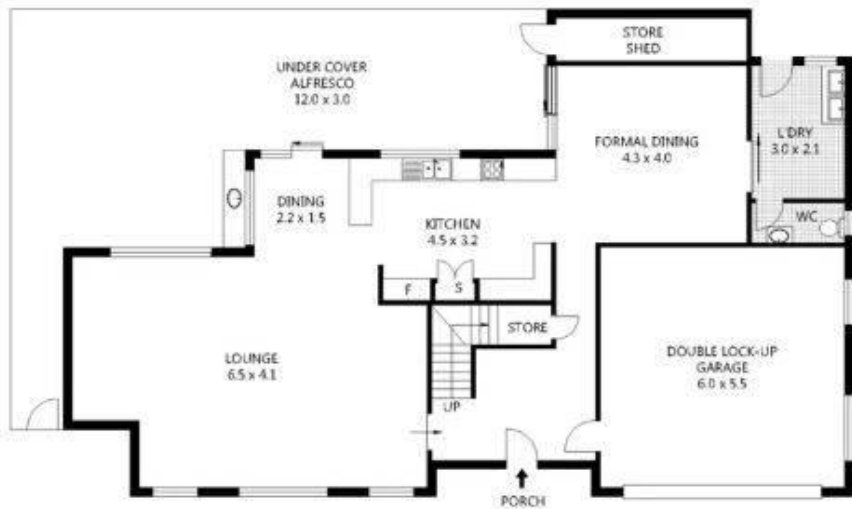
42 South Street, GRANVILLE NSW 2142

[granville.ljhooker.com.au](http://granville.ljhooker.com.au) | [granville@ljhooker.com.au](mailto:granville@ljhooker.com.au)



**Disclaimer:** All information contained therein is gathered from relevant third parties sources. We cannot guarantee or give any warranty about the information provided. Interested parties must rely solely on their own enquiries.

**LJ Hooker Parramatta | Granville |  
Guildford | Merrylands  
(02) 9637 8555**



GROUND LEVEL



LEVEL 1



Scale in metres. Indicative only. Dimensions are approximate. All information contained herein is gathered from sources we believe to be reliable. However we cannot guarantee its accuracy and interested parties should rely on their own enquiries.

RESIDENCE - 187m<sup>2</sup>  
 EXTERNAL - 55m<sup>2</sup>  
 GARAGE - 30m<sup>2</sup>  
 TOTAL AREA - 272m<sup>2</sup>

## 55 Heath Street, Merrylands