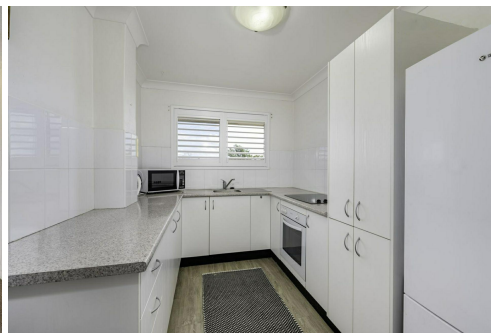
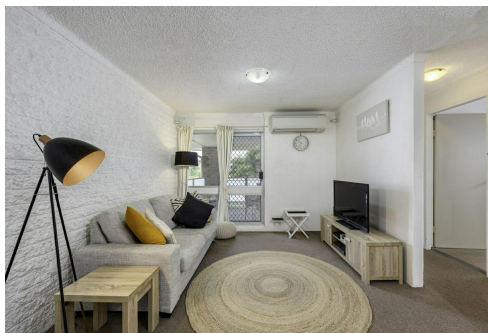


Application Pending

LEASED



Merewether, 14/138-140 Morgan Street "Low Maintenance Living"

This well-presented low maintenance unit is available for lease, furnished or unfurnished to suit your needs!

Features include:

- Two bedrooms with built-in robes
- Open plan lounge/dining room with air-conditioning
- Updated kitchen with electric cooktop, oven, and ample storage
- Updated neat & tidy bathroom with shower and bath combo
- Covered outdoor balcony for relaxation
- Single lock-up garage
- Close to schools, shops, public transport, and Lingard Private Hospital.
- Sorry no pets.
- Photos not to be relied upon.

2

1

1

For Lease
Please Call

View
ljhooker.com.au/1DGBF6H

Contact
Kevin Yarrington
0432 633 257
kyarrington.maitland@ljhooker.com.au



LJ Hooker Maitland
(02) 4933 5511

Disclaimer: All information contained therein is gathered from relevant third parties sources. We cannot guarantee or give any warranty about the information provided. Interested parties must rely solely on their own enquiries.

Disclaimer: The photos indicating the condition of the advertised property may or may not be an exact reflection of the current condition of the property. If you have any concerns please contact the office to confirm this prior to any inspection

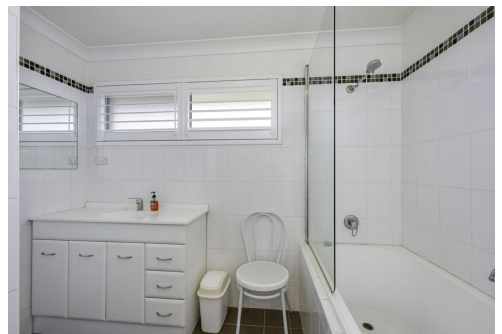
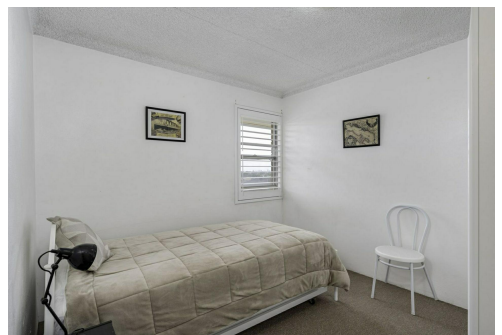
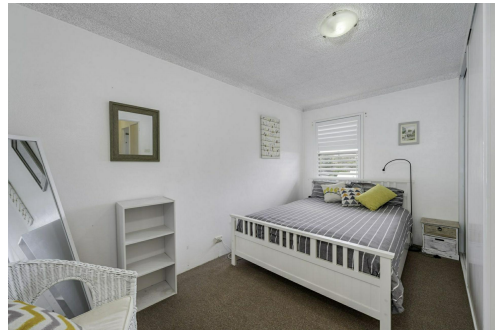
All information contained herein is gathered from sources we deem to be reliable. However, we cannot guarantee its accuracy and interested persons should rely on their own enquiries.

More About this Property

Property ID	1DGBF6H
Property Type	Unit

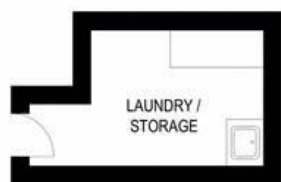
Kevin Yarrington 0432 633 257
Property Investment Manager | kyarrington.maitland@ljhooker.com.au

LJ Hooker Maitland (02) 4933 5511
24 Ken Tubman Drive, MAITLAND NSW 2320
maitland.ljhooker.com.au | maitland@ljhooker.com.au

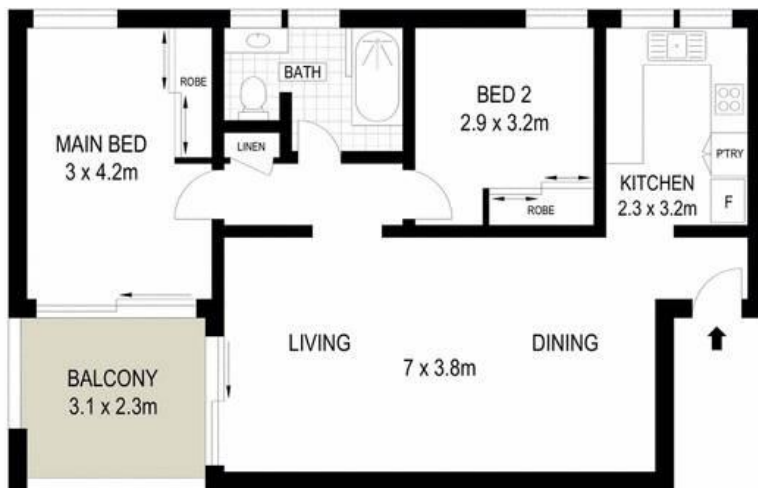


Disclaimer: All information contained therein is gathered from relevant third parties sources. We cannot guarantee or give any warranty about the information provided. Interested parties must rely solely on their own enquiries.

LJ Hooker Maitland
(02) 4933 5511



GROUND FLOOR



SECOND FLOOR



Scale in metres. Indicative only. Dimensions are approximate. All information contained herein is gathered from sources we believe to be reliable. However we cannot guarantee its accuracy and interested persons should rely on their own enquiries



14/138 Morgan Street, Merewether