



205/445 Elizabeth Street, Melbourne

0 🏠 1 🚿 0 🚗

Fully furnished Studio with brilliant location for rent!

FOR RENT

Please Call

AGENCY

LJ Hooker City Residential
(03) 9600 2166

This Apt is located strategically at the heart of vibrant Melbourne CBD. It's on 445 Elizabeth Street and close to almost everywhere,

- 5 mins walk to Aldi, QV Market, Crown Asian Grocery, QV Market Tram Stop, Melbourne Central Tram Stop, and some bars or pubs
- 10 mins walk to QV, State Library, Melbourne Central Mall
- 15 mins to University of Melbourne

• ****Arranging an inspection is easy!****

To book a time to inspect, simply click on the Book an Inspection Time button OR click Contact Agent, email through your details so we can reply with available appointment times for you to register to inspect. By registering, you will be INSTANTLY informed of any updates, changes or cancellations for your appointment.

All information contained therein is gathered from relevant third parties sources. We cannot guarantee or give any warranty about the information provided. Interested parties must rely solely on their own enquiries.

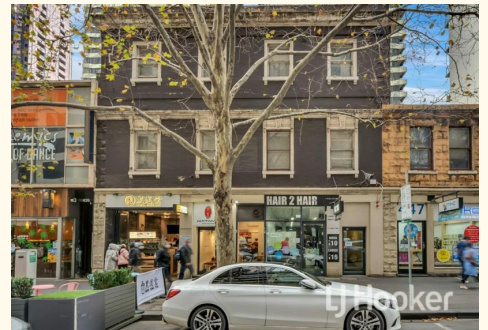
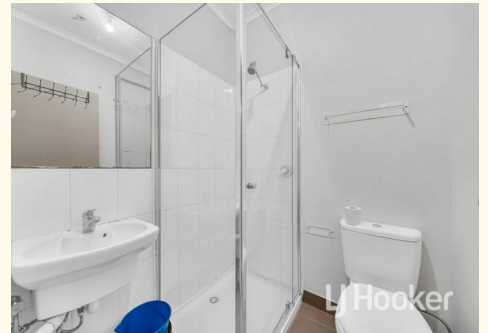
 **LJ Hooker**

MORE DETAILS

Property ID PMDHC2
Property Type Studio
Including 3 Phase Power
Creative

LJ Hooker City Residential (03) 9600 2166

Upper Ground Floor, 439-445 Lonsdale St, MELBOURNE VIC 3000
cityresmelbourne.ljhooker.com.au |
cityresmelbourne@ljhooker.com.au



All information contained therein is gathered from relevant third parties sources.
We cannot guarantee or give any warranty about the information provided.
Interested parties must rely solely on their own enquiries.