



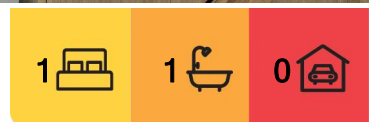
## Melbourne, G13/441 Lonsdale Street

Fully furnished studio apartment with everything you need!

This building is perfectly located in the heart of Melbourne CBD. It is just a walking distance of 5 minutes to Flagstaff station. It is also close to Queen Victoria Market, Emporium and Bourke Street Mall, as well as shops, restaurants and many more. The tram network and buses are just right at the doorstep as well.

\*\*\*\*\*Arranging an inspection is easy!\*\*\*\*\*

To book a time to inspect, simply click on the Book an Inspection Time button OR click Contact Agent, email through your details so we can reply with available appointment times for you to register to inspect. By registering, you will be INSTANTLY informed of any updates, changes or cancellations for your appointment.



**For Lease**  
Please Call

**View**  
[ljhooker.com.au/N8XHC2](http://ljhooker.com.au/N8XHC2)



**LJ Hooker City Residential**  
(03) 9600 2166

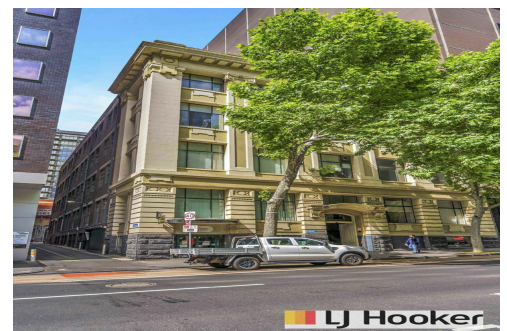
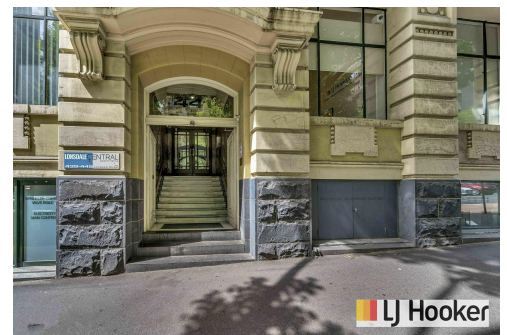
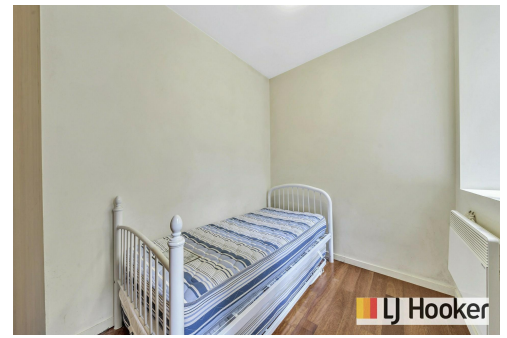
**Disclaimer:** All information contained therein is gathered from relevant third parties sources. We cannot guarantee or give any warranty about the information provided. Interested parties must rely solely on their own enquiries.

## More About this Property

Property ID	N8XHC2
Property Type	Apartment

### LJ Hooker City Residential (03) 9600 2166

Upper Ground Floor, 439-445 Lonsdale St, MELBOURNE VIC 3000  
[cityresmelbourne.ljhooker.com.au](mailto:cityresmelbourne.ljhooker.com.au) | [cityresmelbourne@ljhooker.com.au](mailto:cityresmelbourne@ljhooker.com.au)



**Disclaimer:** All information contained therein is gathered from relevant third parties sources.  
We cannot guarantee or give any warranty about the information provided. Interested parties must rely solely on their own enquiries.

**LJ Hooker City Residential**  
**(03) 9600 2166**