

Melbourne, 506/253 Franklin Street

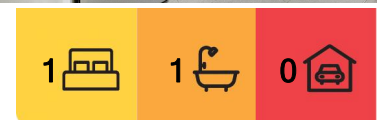
Modern Studio Apartment with Prime Location for Lease!

Situated in a highly sought-after location directly opposite the famous Queen Victoria Market, this fully furnished cozy apartment on Franklin Street is only a few minutes away from RMIT, University of Melbourne, Flagstaff Gardens, Melbourne Central, Bourke Street Mall, Southern Cross Station and some of Melbourne's best cafes, restaurants and entertainment venues.

This fully furnished studio apartment is quick to set the benchmark for convenient inner city living, offering an environmentally sustainable design. This studio apartment includes modern appliances, fridge, dishwasher, split system, washing machine and dryer, television, security entrance with intercom, private balcony and bicycle storage area.



Disclaimer: All information contained therein is gathered from relevant third parties sources. We cannot guarantee or give any warranty about the information provided. Interested parties must rely solely on their own enquiries.



For Lease

\$500 Fully furnished pw

View

Fri 23rd May @ 5:00PM - 5:15PM

LJ Hooker City Residential
(03) 9600 2166

*****Arranging an inspection is easy!*****

To book a time to inspect, simply click on the Book an Inspection Time button OR click Contact Agent, email through your details so we can reply with available appointment times for you to register to inspect. By registering, you will be INSTANTLY informed of any updates, changes or cancellations for your appointment.

More About this Property

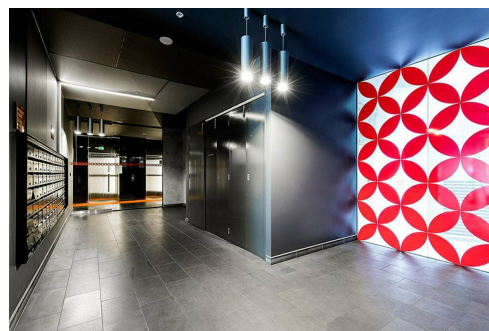
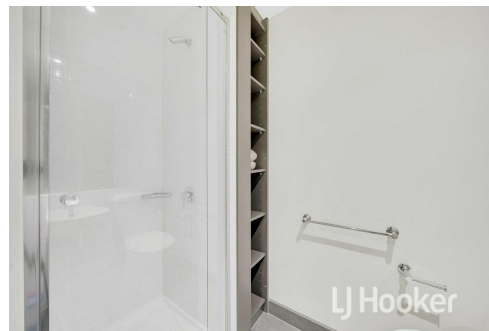
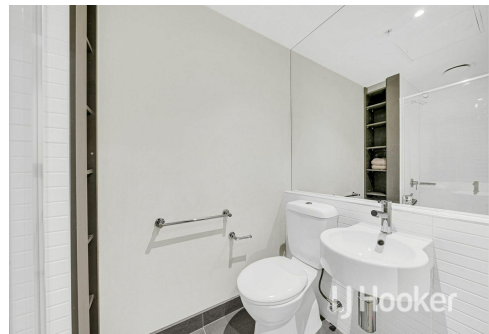
Property ID NS7HC2

Property Type Apartment

LJ Hooker City Residential (03) 9600 2166

Upper Ground Floor, 439-445 Lonsdale St, MELBOURNE VIC 3000

cityresmelbourne.ljhooker.com.au | cityresmelbourne@ljhooker.com.au



LJ Hooker City Residential
(03) 9600 2166

Disclaimer: All information contained therein is gathered from relevant third parties sources. We cannot guarantee or give any warranty about the information provided. Interested parties must rely solely on their own enquiries.