

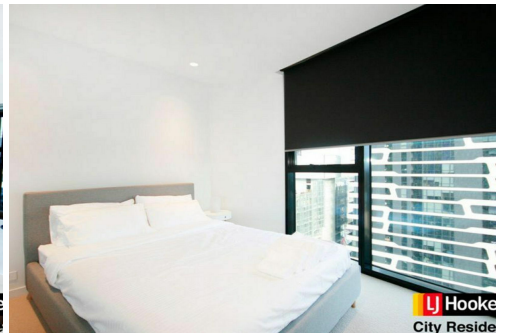
LJ Hooker
City Residential



LJ Hooker
City Residential



LJ Hooker
City Residential



LJ Hooker
City Residential

Melbourne, 4606/442-450 Elizabeth Street

Fully Furnished 1-Bedroom Apartment with Great Views at Lighthouse for Lease!

Lighthouse is a landmark building with benchmark design. Set between 2 of Melbourne's iconic streets, Franklin and Elizabeth Street, this beautiful building rises from the city's rich cultural fabric and brings a new level of sophisticated elegance to the CBD.

The development features automated car parking stacker system, pool and resident lounge areas along with amazing views across Melbourne and beyond.

The open-plan living area will assist you in enjoying spectacular views. Its well positioned kitchen is equipped with stainless steel appliances and has plenty of cupboard space. It has a spacious bedroom, which offers BIR's and City views. Other features include secure intercom access, floor to ceiling windows, stylish bathroom, split system air-con and generously sized balcony.



For Lease
\$680 Fully Furnished pw

View
By Appointment

LJ Hooker

LJ Hooker City Residential
(03) 9600 2166

Disclaimer: All information contained therein is gathered from relevant third parties sources. We cannot guarantee or give any warranty about the information provided. Interested parties must rely solely on their own enquiries.

Features include:

- Secure video entrance
- Generous bedrooms with built-in robes
- Sparkling bathroom
- Open plan living and dining areas
- Kitchen with dishwasher, gas cooktop, appliances and refrigerator
- European laundry, dryer and washing machine
- Split air-con system
- On-site building manager
- Building facilities including gym, pool, spa, and resident lounge areas along with amazing views across Melbourne and beyond

*****Arranging an inspection is easy!*****

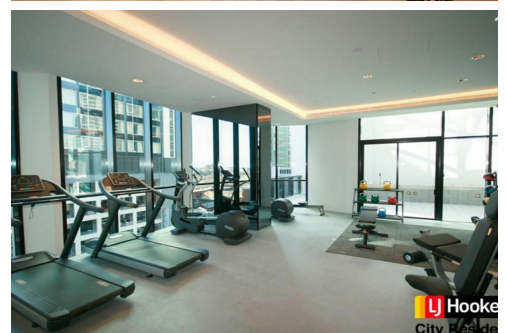
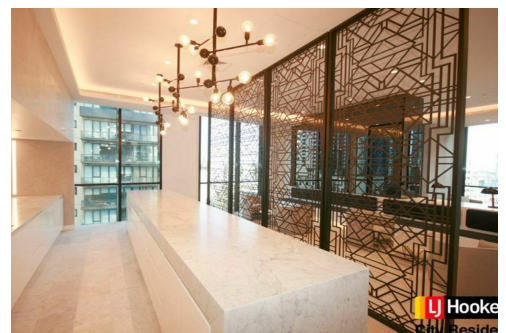
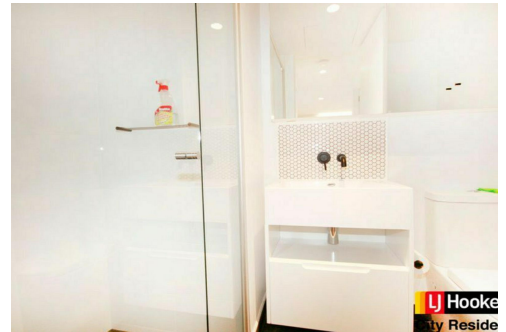
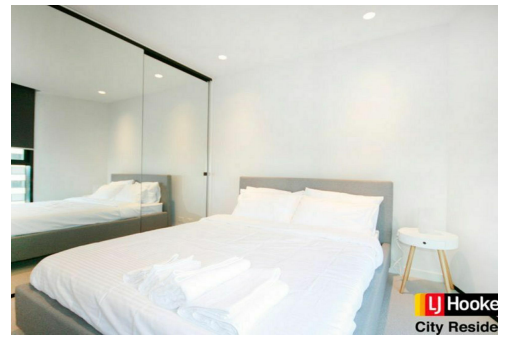
To book a time to inspect, simply click on the Book an Inspection Time button OR click Contact Agent, email through your details so we can reply with available appointment times for you to register to inspect. By registering, you will be INSTANTLY informed of any updates, changes or cancellations for your appointment.

More About this Property

Property ID	N3QHC2
Property Type	Apartment

LJ Hooker City Residential (03) 9600 2166

Upper Ground Floor, 439-445 Lonsdale St, MELBOURNE VIC 3000
cityresmelbourne.ljhooker.com.au | cityresmelbourne@ljhooker.com.au



LJ Hooker City Residential
(03) 9600 2166

Disclaimer: All information contained therein is gathered from relevant third parties sources. We cannot guarantee or give any warranty about the information provided. Interested parties must rely solely on their own enquiries.