

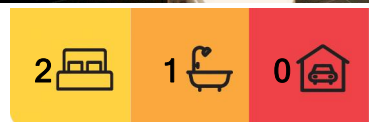
Melbourne, 4110/442-450 Elizabeth Street

Fully-Furnished 2 Bed Apt in Ligh House for Lease

Register for inspection is easy! Simply register your contact details or choose your time, our leasing consultant will contact you ASAP!

Lighthouse is a landmark building with benchmark design. Set between two of Melbourne's iconic streets Franklin and Elizabeth Street, this beautiful building rises from the city's rich cultural fabric and brings a new level of sophisticated elegance to the CBD. The development will feature automated car parking stacker system, pool and resident lounge areas along with amazing views across Melbourne and beyond.

Open-plan living area with balcony connected provide natural light and stunning views for your everyday life. Well positioned kitchen equipped with stainless steel appliances and plenty of storage space. Comfort size bedrooms offer BIR's, windows and City views. Other features comprising secure intercom access; floor to ceiling windows; stylish bathroom; split air-con system; good size balcony.



For Lease
Please Call

View
ljhooker.com.au/NAXHC2



LJ Hooker City Residential
(03) 9600 2166

Disclaimer: All information contained therein is gathered from relevant third parties sources. We cannot guarantee or give any warranty about the information provided. Interested parties must rely solely on their own enquiries.

Features:

- Both bedrooms with built-in robes
- Sparking bathroom
- Open plan living and dining with adjacent balcony with city view
- Kitchen with dishwasher+ gas cook top + cookwares
- European laundry + Wash Machine
- Split air-con system
- White goods
- On-site building manager
- Building facilities including gym, pool, spa, and resident lounge areas along with amazing views across Melbourne and beyond

DON'T MISS OUT THIS HOT PROPERTY

Please contact Leasing Department 0489 994 288 for more information.

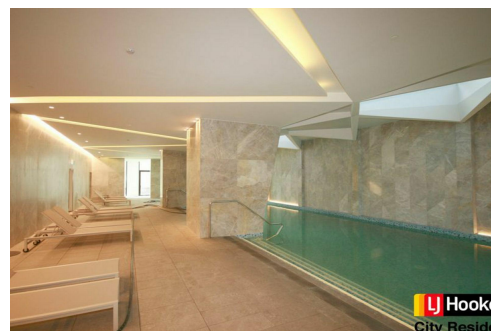
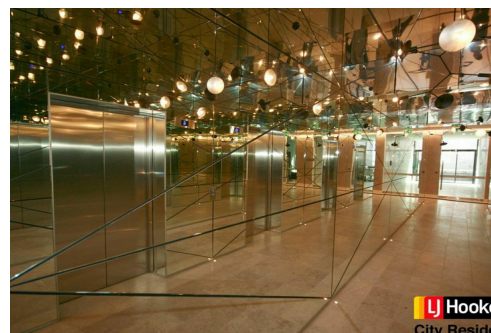
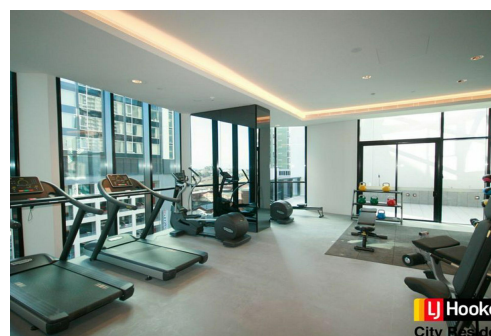
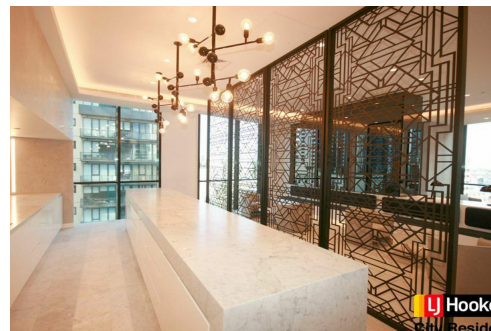
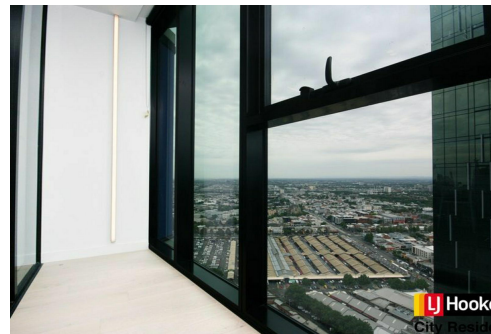
Please notes : photo ID is required upon arrival for inspection.

More About this Property

Property ID	NAXHC2
Property Type	Apartment

LJ Hooker City Residential (03) 9600 2166

Upper Ground Floor, 439-445 Lonsdale St, MELBOURNE VIC 3000
cityresmelbourne.ljhooker.com.au | cityresmelbourne@ljhooker.com.au



Disclaimer: All information contained therein is gathered from relevant third parties sources.
We cannot guarantee or give any warranty about the information provided. Interested parties must rely solely on their own enquiries.

LJ Hooker City Residential
(03) 9600 2166