

Melbourne, 2809/11 Rose Lane

Short Stay for a Minimum 1 month at \$1000 per week including bills, longer-term available, please enquire.

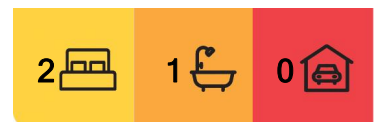
This is a complexing 2-bedroom apartment in the heart of Melbourne CBD.

This apartment has an open plan kitchen with stainless steel appliances and electronic cooktop. It also Includes oven and dishwasher. There is natural lighting throughout the living area. It has a wonderful floorplan and has no wasting space. Its amazing city view will easily to catch your eyes!

It is just walking distance to Southern Cross Station, shops, coles, restaurants and also located in the free tram zone.



Disclaimer: All information contained therein is gathered from relevant third parties sources. We cannot guarantee or give any warranty about the information provided. Interested parties must rely solely on their own enquiries.



For Lease

Please Call

View

ljhooker.com.au/MKGHC2

Contact

John Meng

0430 808 998

jmeng.cityresmelbourne@ljhooker.com.au

LJ Hooker City Residential
(03) 9600 2166

This apartment will bring forth a beautiful lifestyle to all.

- Open plan living/dining area
- Complex building included gym, swimming pool, shops and cafes
- Reverse cycle heating and cooling air-conditioner
- Cabinets with perfect color, which coordinates well with the floorboards
- Building facilities include security entrance, internal lifts and intercom to complete

*****Arranging an inspection is easy!*****

To book a time to inspect, simply click on the Book an Inspection Time button OR click Contact Agent, email through your details so we can reply with available appointment times for you to register to inspect. By registering, you will be INSTANTLY informed of any updates, changes or cancellations for your appointment.

Preferred rental payment method is via SimpleRent: Direct Debit from Bank Account (\$1.10 inclusive of GST. per transaction) or Credit Card (Visa Master Card 1.98% / Amex 4.4% per transaction).

More About this Property

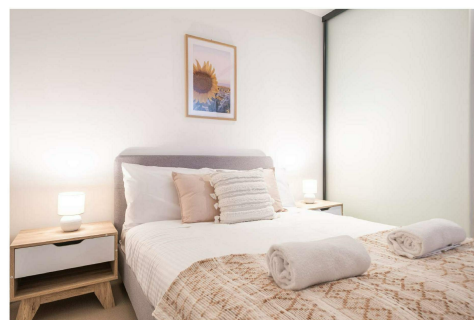
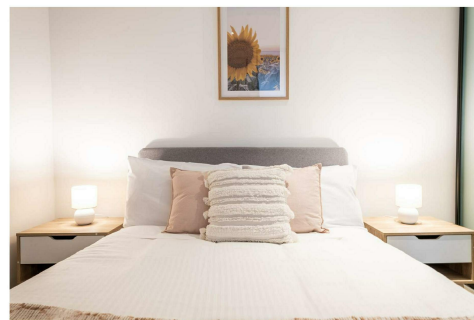
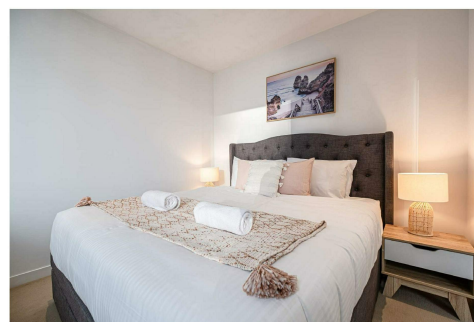
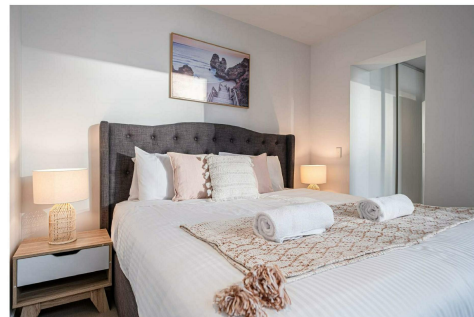
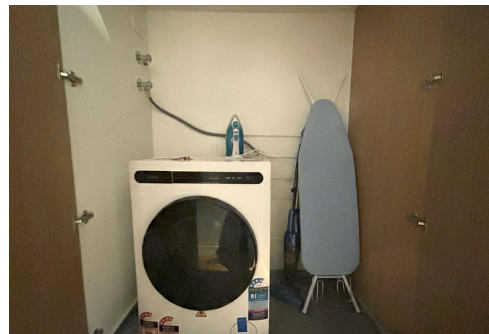
Property ID	MKGHC2
Property Type	Apartment
Including	Close to Shops

John Meng

Principal, Managing Director, OIEC |
jmeng.cityresmelbourne@ljhooker.com.au

LJ Hooker City Residential (03) 9600 2166

Upper Ground Floor, 439-445 Lonsdale St, MELBOURNE VIC 3000
cityresmelbourne.ljhooker.com.au | cityresmelbourne@ljh.com.au



Disclaimer: All information contained therein is gathered from relevant third parties sources. We cannot guarantee or give any warranty about the information provided. Interested parties must rely solely on their own enquiries.

LJ Hooker City Residential
(03) 9600 2166