

Melbourne, 2502/8 Downie Street

Amazing 2-Bedroom Apartment for Lease!

*Fully Furnished Option is Available at Extra Cost

Located in the Eiffel residential complex near Flinders Street, this apartment is close to all of Melbourne's major attractions, such as Crown Casino, Southern Cross Station, Spencer Street Mall and Etihad stadium.

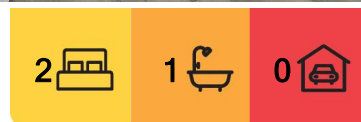
This apartment features 2 bedrooms, ultra and modern bathroom and kitchen with stainless steel gas cooking, split-system heating and cooling, internal laundry and dining room that leads onto a large balcony.

Facilities include:

- Indoor swimming pool
- Spa
- Sauna



Disclaimer: All information contained therein is gathered from relevant third parties sources. We cannot guarantee or give any warranty about the information provided. Interested parties must rely solely on their own enquiries.



For Lease
Please Call

View
ljhooker.com.au/MZ3HC2

LJ Hooker City Residential
(03) 9600 2166

- Gym

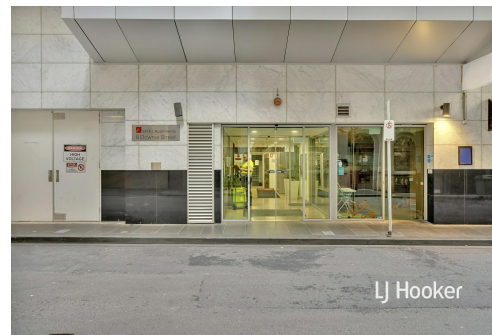
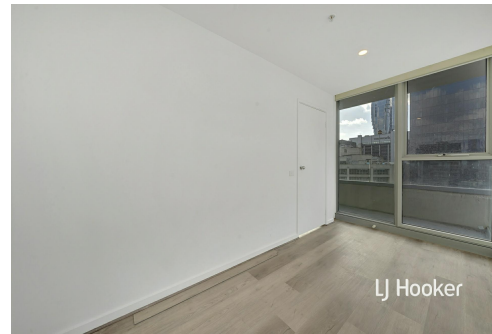
*****Arranging an inspection is easy!*****

To book a time to inspect, simply click on the Book an Inspection Time button OR click Contact Agent, email through your details so we can reply with available appointment times for you to register to inspect. By registering, you will be INSTANTLY informed of any updates, changes or cancellations for your appointment.

More About this Property

Property ID	MZ3HC2
Property Type	Apartment

LJ Hooker City Residential (03) 9600 2166
Upper Ground Floor, 439-445 Lonsdale St, MELBOURNE VIC 3000
cityresmelbourne.ljhooker.com.au | cityresmelbourne@ljhooker.com.au



Disclaimer: All information contained therein is gathered from relevant third parties sources. We cannot guarantee or give any warranty about the information provided. Interested parties must rely solely on their own enquiries.

LJ Hooker City Residential
(03) 9600 2166