

Melbourne, 2410/81 A'beckett Street

Beautiful 2-bedroom, 1-bathroom and 1 carpark apartment in Empire!

*Fully Furnished Option is Available at Extra Cost

Empire Melbourne is a landmark building set between Melbourne's 2 iconic streets, A'Beckett Street and Elizabeth Street. This building rises from the city's rich cultural fabric and brings a new level of sophisticated elegance to the CBD.

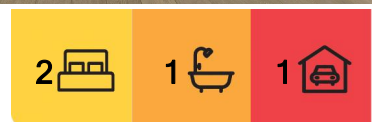
The development features pool and resident lounge areas along with amazing views across Melbourne and beyond. This apartment is just a walking distance to Victoria Market, Melbourne Central Station, RMIT and Melbourne University, in a free tram zone.

Features include:

- Secure video entrance
- Secure car park



Disclaimer: All information contained therein is gathered from relevant third parties sources. We cannot guarantee or give any warranty about the information provided. Interested parties must rely solely on their own enquiries.



For Lease
Please Call

View
ljhooker.com.au/MZWHC2

LJ Hooker City Residential
(03) 9600 2166

- 2 generous bedrooms with built-in robes
- Open balcony with city view
- Sparkling bathroom
- Open plan living and dining with adjacent balcony with view
- Kitchen with dishwasher + gas cooktop + appliances
- European laundry
- Split air-con system
- On-site building manager
- Building facilities including gym, pool, spa and resident lounge areas along with amazing views across Melbourne and beyond

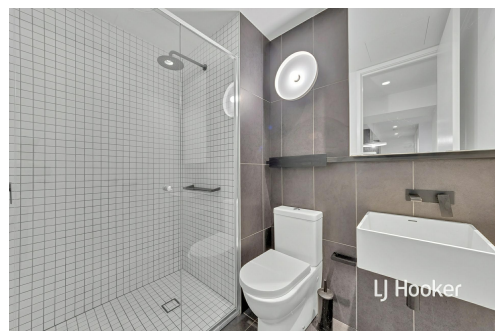
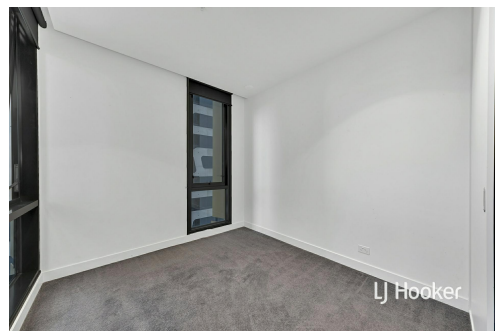
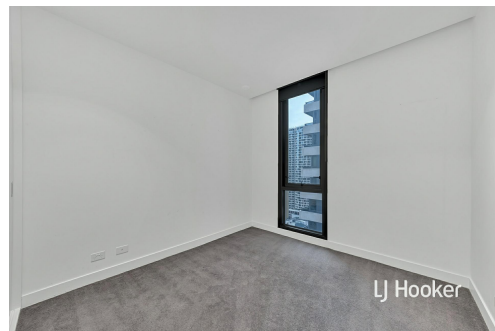
*****Arranging an inspection is easy!*****

To book a time to inspect, simply click on the Book an Inspection Time button OR click Contact Agent, email through your details so we can reply with available appointment times for you to register to inspect. By registering, you will be INSTANTLY informed of any updates, changes or cancellations for your appointment.

More About this Property

Property ID	MZWHC2
Property Type	Apartment

LJ Hooker City Residential (03) 9600 2166
Upper Ground Floor, 439-445 Lonsdale St, MELBOURNE VIC 3000
cityresmelbourne.ljhooker.com.au | cityresmelbourne@ljhooker.com.au



Disclaimer: All information contained therein is gathered from relevant third parties sources. We cannot guarantee or give any warranty about the information provided. Interested parties must rely solely on their own enquiries.

LJ Hooker City Residential
(03) 9600 2166