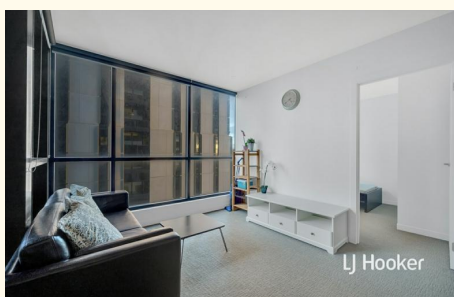
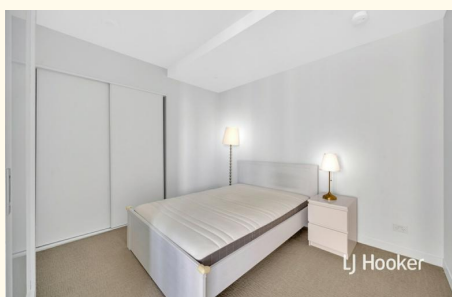


LJ Hooker




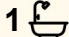

LJ Hooker



LJ Hooker



2305/80 A'beckett Street, Melbourne

1  1  0 

Apartment for rent with stunning city view in MY80! Close to everything!

FOR RENT

\$580 a week pw

VIEW

Sun 14th Jun @ 2:00PM - 2:15PM

AGENCY

LJ Hooker City Residential
(03) 9600 2166

- Fully furnished option is available at extra cost

Taking exclusive city-central living to new heights, MY80 is a highly sought-after apartment complex conveniently placed on the corner of Elizabeth Street and A'Beckett Street. This apartment is just a 2-minute walk from Melbourne Central, RMIT, and the Queen Victoria Market. With shops, trains, cafes, and restaurants at your fingertips, it offers both comfort and convenience.

Features:

- Washing machine, fridge, study table
- Intercom and keyless entry
- Indoor swimming pool
- Well-equipped gymnasium
- Rooftop communal sky lounge and terrace
- Business center, residents' lounge, and cinema

- ****Arranging an inspection is easy!****

All information contained therein is gathered from relevant third parties sources. We cannot guarantee or give any warranty about the information provided. Interested parties must rely solely on their own enquiries.

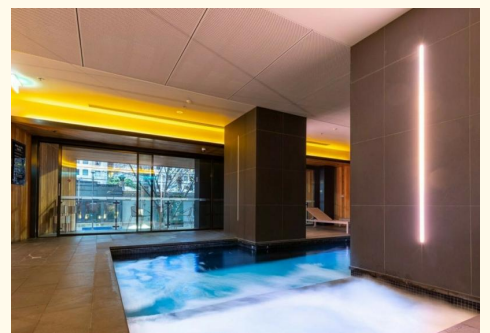
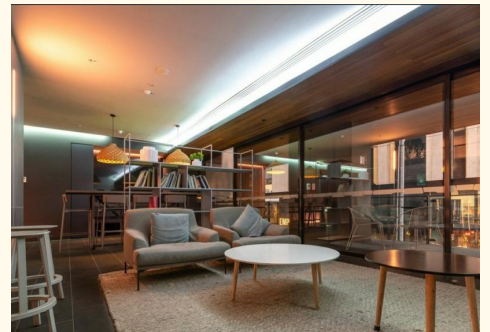
 **LJ Hooker**

To book a time to inspect, simply click on the Book an Inspection Time button OR click Contact Agent, email through your details so we can reply with available appointment times for you to register to inspect. By registering, you will be INSTANTLY informed of any updates, changes or cancellations for your appointment

MORE DETAILS

Property ID PKRHC2
Property Type Apartment

LJ Hooker City Residential (03) 9600 2166
Upper Ground Floor, 439-445 Lonsdale St, MELBOURNE VIC 3000
cityresmelbourne.ljhooker.com.au |
cityresmelbourne@ljhooker.com.au



All information contained therein is gathered from relevant third parties sources.
We cannot guarantee or give any warranty about the information provided.
Interested parties must rely solely on their own enquiries.