

## Melbourne, 1808/68 La Trobe Street

2-bedroom apartment in Concept Blue available for rent!

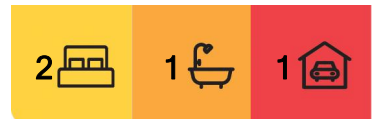
\*Fully Furnished Option is Available at Extra Cost

Concept Blue' Apartments is situated in the heart of Melbourne CBD, with trams right at your doorstep and is within close proximity to QV, Emporium, Melbourne Central, State Library, Melbourne University, RMIT, Carlton Gardens and many more.

The building provides a range of amenities. These include dedicated resident spaces for outdoor lounging and entertaining, along with resort-style health and wellness facilities. This apartment also comes with a bright lounge.



**Disclaimer:** All information contained therein is gathered from relevant third parties sources. We cannot guarantee or give any warranty about the information provided. Interested parties must rely solely on their own enquiries.



**For Lease**

Please Call

**View**

[ljhooker.com.au/MT3HC2](http://ljhooker.com.au/MT3HC2)

**LJ Hooker City Residential**  
**(03) 9600 2166**

Additional features include:

- Main bedroom with direct access to a dual-entry central bathroom boasting modern fittings and complemented by walk-in robes
- Plenty of cupboard space
- Separate powder room
- 24-hour security and concierge

\*\*\*\*\*Arranging an inspection is easy!\*\*\*\*\*

To book a time to inspect, simply click on the Book an Inspection Time button OR click Contact Agent, email through your details so we can reply with available appointment times for you to register to inspect. By registering, you will be INSTANTLY informed of any updates, changes or cancellations for your appointment.

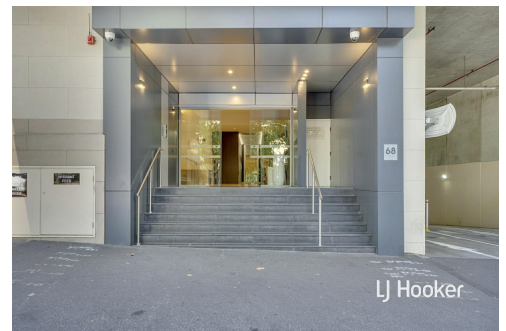
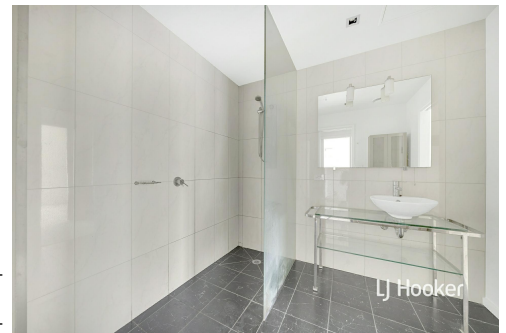
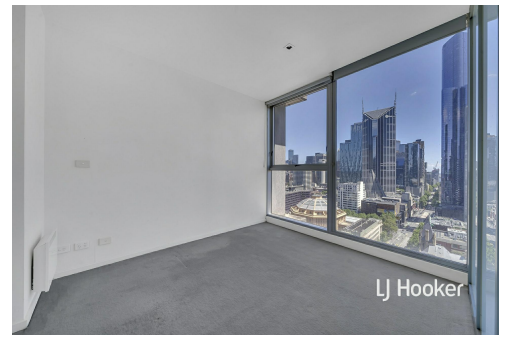
Preferred rental payment method is via SimpleRent: Direct Debit from Bank Account (\$1.10 inclusive of GST. per transaction) or Credit Card (Visa Master Card 1.98% / Amex 4.4% per transaction).

## More About this Property

<b>Property ID</b>	MT3HC2
<b>Property Type</b>	Apartment

### LJ Hooker City Residential (03) 9600 2166

Upper Ground Floor, 439-445 Lonsdale St, MELBOURNE VIC 3000  
cityresmelbourne.ljhooker.com.au | cityresmelbourne@ljh.com.au



**LJ Hooker City Residential**  
**(03) 9600 2166**

**Disclaimer:** All information contained therein is gathered from relevant third parties sources. We cannot guarantee or give any warranty about the information provided. Interested parties must rely solely on their own enquiries.