

Melbourne, 1804/442-450 Elizabeth Street

Lighthouse Apartments in CBD for Rent!

*Fully Furnished Option is Available at Extra Cost

Lighthouse is a landmark building with benchmark design. Set between 2 of Melbourne's iconic streets, Franklin and Elizabeth Street, this beautiful building rises from the city's rich cultural fabric and brings a new level of sophisticated elegance to the CBD.

The development will feature automated car parking stacker system, pool and resident lounge areas along with amazing views across Melbourne and beyond.

Its open-plan living area extends with outdoor balcony, which will assist you in



Disclaimer: All information contained therein is gathered from relevant third parties sources. We cannot guarantee or give any warranty about the information provided. Interested parties must rely solely on their own enquiries.

LEASED

LJ Hooker
City Reside

2

1

0

For Lease

Please Call

View

ljhooker.com.au/MTNHC2

LJ Hooker City Residential
(03) 9600 2166

enjoying spectacular views. It also has a well-positioned kitchen equipped with stainless steel appliances and has plenty of cupboard space. This apartment's spacious bedroom offers BIR's and city views.

Other features include secure intercom access, floor to ceiling windows, stylish bathroom, split system air-con and generously sized balcony.

Features include:

- Secure video entrance
- Generous bedrooms with built-in robes
- Sparkling bathroom
- Open plan living and dining with adjacent balcony with city views
- Kitchen with dishwasher + gas cooktop + appliances
- European laundry
- Split air-con system
- On-site building manager
- Building facilities including gym, pool, spa, and resident lounge areas along with amazing views across Melbourne and beyond

*****Arranging an inspection is easy!*****

To book a time to inspect, simply click on the Book an Inspection Time button OR click Contact Agent, email through your details so we can reply with available appointment times for you to register to inspect. By registering, you will be INSTANTLY informed of any updates, changes or cancellations for your appointment.

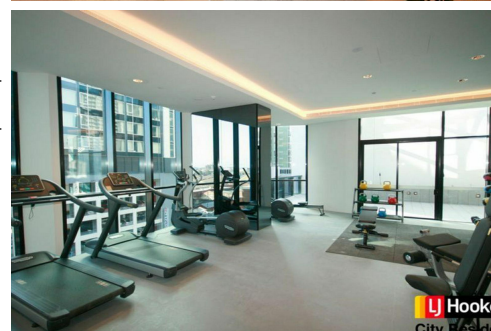
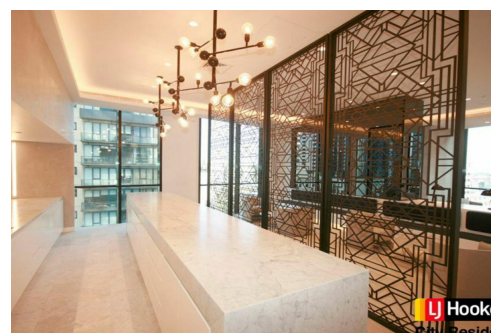
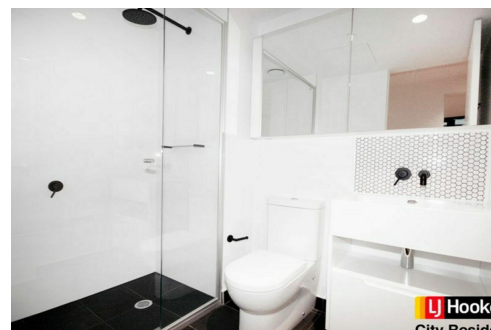
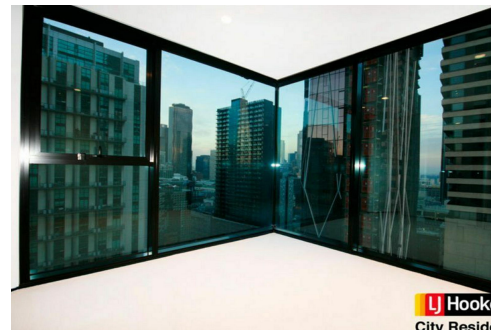
Preferred rental payment method is via SimpleRent: Direct Debit from Bank Account (\$1.10 inclusive of GST. per transaction) or Credit Card (Visa Master Card 1.98% / Amex 4.4% per transaction).

More About this Property

Property ID	MTNHC2
Property Type	Apartment

LJ Hooker City Residential (03) 9600 2166

Upper Ground Floor, 439-445 Lonsdale St, MELBOURNE VIC 3000
cityresmelbourne.ljhooker.com.au | cityresmelbourne@ljh.com.au



Disclaimer: All information contained therein is gathered from relevant third parties sources. We cannot guarantee or give any warranty about the information provided. Interested parties must rely solely on their own enquiries.

LJ Hooker City Residential
(03) 9600 2166