



1405/33 Rose Lane, Melbourne

Beautiful 2-bedroom apartment for lease!

- Fully Furnished Option is Available at Extra Cost



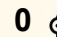
This 2-bedroom and 1-bathroom apartment is located at one of the most convenience locations in Melbourne CBD. The 1-minute walking distance to Southern Cross Station and tram stops, and free trams to universities and colleges in CBD never becomes a dream anymore!

The spacious layout offers floor to ceiling windows and a generous balcony embracing magnificent views. Its modern kitchen is finished in glass and stone with top of the range appliance.

Exclusive building facilities include concierge, indoor-heated pool, sauna, gymnasium, an impressive common area which includes a conference room, undercover BBQ facilities and even a rock-climbing space.

It is also a 2-minute walk to Coles Supermarket and bus terminal direct to Melbourne Airport and bus transit to other states. This apartment also features branded oven, dishwasher, multi-functional entry system, balcony, electric cooktop, great facilities and many more.

All information contained therein is gathered from relevant third parties sources. We cannot guarantee or give any warranty about the information provided. Interested parties must rely solely on their own enquiries.

2  1  0 

FOR RENT
\$680 a week pw

VIEW
By Appointment

AGENCY
LJ Hooker City Residential
(03) 9600 2166

 **LJ Hooker**

- ****Arranging an inspection is easy!****

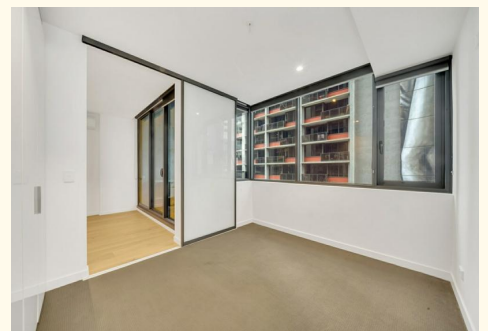
To book a time to inspect, simply click on the Book an Inspection Time button OR click Contact Agent, email through your details so we can reply with available appointment times for you to register to inspect. By registering, you will be INSTANTLY informed of any updates, changes or cancellations for your appointment.

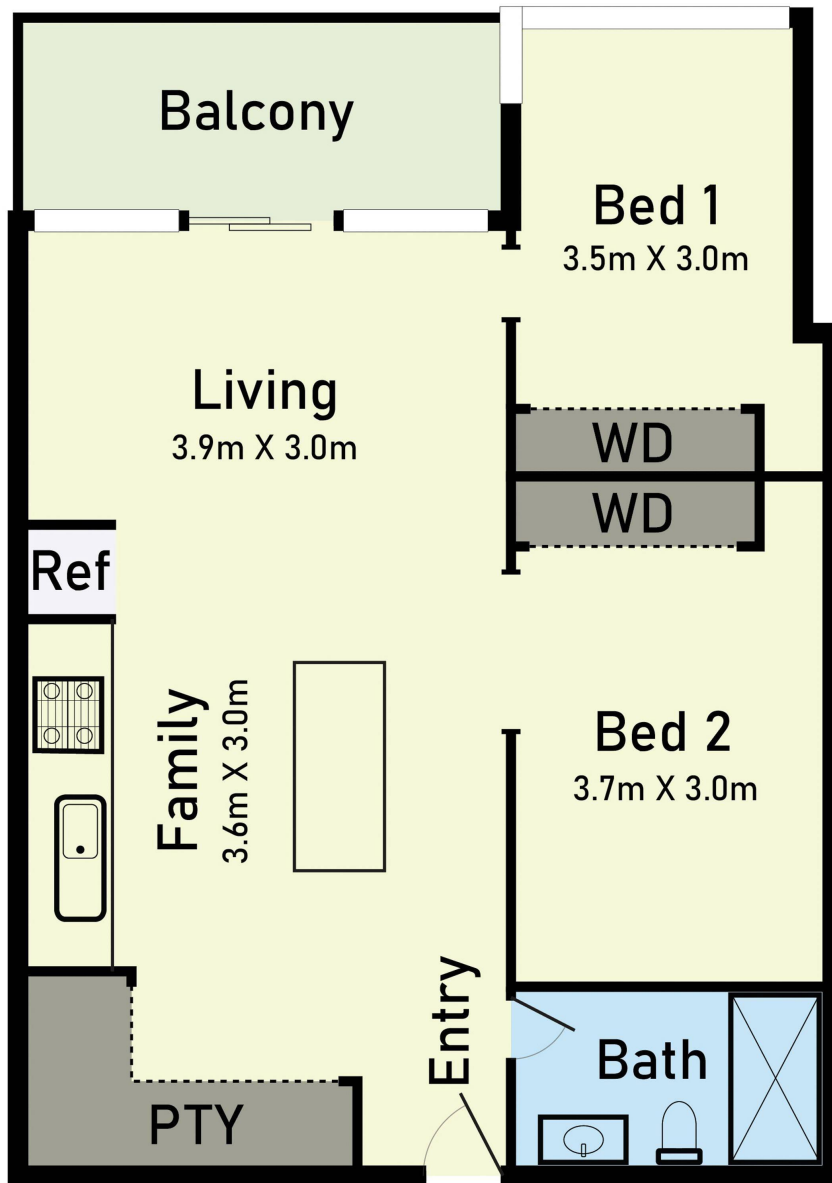
MORE DETAILS

Property ID	PNTHC2
Property Type	Apartment
Including	Creative

LJ Hooker City Residential (03) 9600 2166

Upper Ground Floor, 439-445 Lonsdale St, MELBOURNE VIC 3000
cityresmelbourne.ljhooker.com.au |
cityresmelbourne@ljhooker.com.au





1405/33 Rose Lane Melbourne

* Dimensions are approximate and for illustrative purposes only