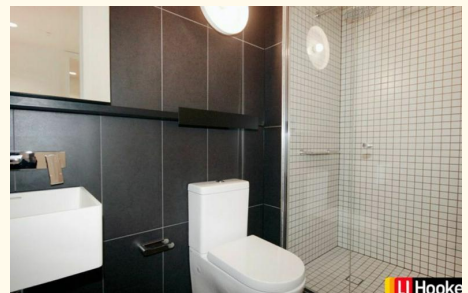




Leased



1404/398 Elizabeth Street, Melbourne

1 1 0

## Empire One Bedroom Apartment For Lease! Large Space!

Empire Melbourne is a landmark building set between two of Melbourne's iconic streets A'Beckett st and Elizabeth Street, this beautiful building rises from the city's rich cultural fabric and brings a new level of sophisticated elegance to the CBD. The development will feature pool, and resident lounge areas along with amazing views across Melbourne and beyond. Walking distance to Victoria Market, Melbourne Central Station, RMIT & Melbourne University, in free tram zone.

Open-plan living area extends with outdoor balcony assists you in enjoying spectacular views. Well positioned kitchen equipped with stainless steel appliances and plenty of cupboard space. Spacious bedroom offers BIR's, Other features comprising secure intercom access; floor to ceiling windows; stylish bathroom; split system air-con; generously sized balcony.

### Features:

- Secure video entrance
- Generous bedroom with built-in robes
- Sparking bathroom
- Open plan living and dining with adjacent balcony with view

### FOR RENT

Please Call

### AGENCY

LJ Hooker City Residential  
(03) 9600 2166

All information contained therein is gathered from relevant third parties sources.  
We cannot guarantee or give any warranty about the information provided.  
Interested parties must rely solely on their own enquiries.

LJ Hooker

- Kitchen with dishwasher+ gas cook top + appliances
- European Laundry
- Split air-con system
- On site building manager
- Building Facilities including gym, pool, spa, and resident lounge areas along with amazing views across Melbourne and beyond

- \*\*\*\*Arranging an inspection is easy!\*\*\*\*

To book a time to inspect, simply click on the Book an Inspection Time button OR click Contact Agent, email through your details so we can reply with available appointment times for you to register to inspect. By registering, you will be INSTANTLY informed of any updates, changes or cancellations for your appointment. Please notes that photo.ID is required at all times of inspection.

## MORE DETAILS

Property ID	P1PHC2
Property Type	Apartment

### LJ Hooker City Residential (03) 9600 2166

Upper Ground Floor, 439-445 Lonsdale St, MELBOURNE VIC 3000  
[cityresmelbourne.ljhooker.com.au](http://cityresmelbourne.ljhooker.com.au) |  
[cityresmelbourne@ljhooker.com.au](mailto:cityresmelbourne@ljhooker.com.au)

