



Melbourne, 101/445 Elizabeth Street

Fully Furnished Lovely One Bedroom Studio for Lease!

Please be aware that there are multiple units available, and the price varies for each specific unit.

- 105/445 Elizabeth St (Studio) - \$260/week

Features:

- Waterbill included
- Fully Furnished
- Timber flooring throughout
- Sleek bathroom with shower
- Electric cooking facilities and fridge



Disclaimer: All information contained therein is gathered from relevant third parties sources. We cannot guarantee or give any warranty about the information provided. Interested parties must rely solely on their own enquiries.

LEASED

1

1

0

For Lease

Please Call

View

ljhooker.com.au/MMDHC2

LJ Hooker City Residential
(03) 9600 2166

- Security building entrance

All within walking distance to Universities, Trams, Shops, Supermarkets, Cafes and Restaurants. It just closes to everything you are looking for!

****Arranging an inspection is easy!****

To book a time to inspect, simply click on the Book an Inspection Time button OR click Contact Agent, email through your details so we can reply with available appointment times for you to register to inspect. By registering, you will be INSTANTLY informed of any updates, changes or cancellations for your appointment.

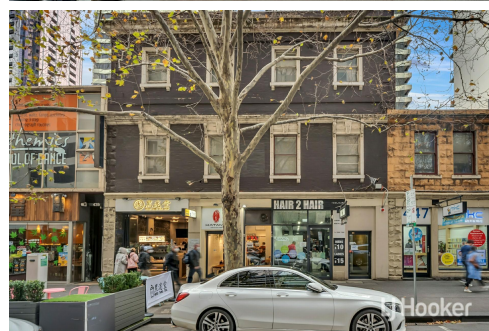
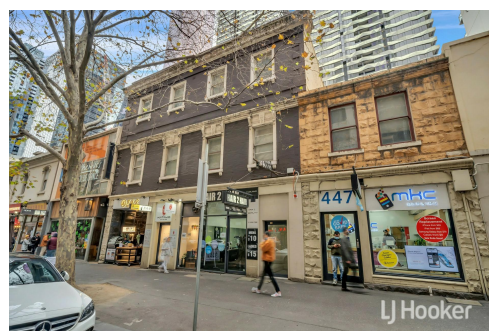
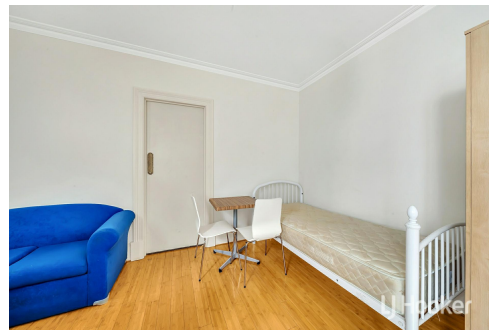
Preferred rental payment method is via SimpleRent: Direct Debit from Bank Account (\$1.10 inclusive of GST. per transaction) or Credit Card (Visa Master Card 1.98% / Amex 4.4% per transaction).

More About this Property

Property ID	MMDHC2
Property Type	Apartment

LJ Hooker City Residential (03) 9600 2166

Upper Ground Floor, 439-445 Lonsdale St, MELBOURNE VIC 3000
cityresmelbourne.ljhooker.com.au | cityresmelbourne@ljh.com.au



LJ Hooker City Residential
(03) 9600 2166

Disclaimer: All information contained therein is gathered from relevant third parties sources. We cannot guarantee or give any warranty about the information provided. Interested parties must rely solely on their own enquiries.