

Meadowbrook, 7 Chancellor Circuit

Great Lowset Family Home with a 10m x 4m workshop garage!!

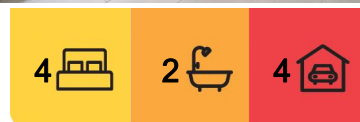
Step inside this fantastic 4-bedroom family home, offering comfort, space, and practicality for modern living. Situated on a generous 687m² block with excellent storage options and a fully fenced backyard, this home is perfect for families and tradies alike.

Property Features:

- 4 bedrooms, including master with two wardrobes, ensuite, and air conditioning
- Main bathroom with a bathtub
- Separate lounge and dining areas, both with air conditioning
- Well-appointed kitchen with a cooktop and separate oven
- Internal laundry with ample storage
- Spacious covered patio for entertaining
- Double remote lock-up garage with additional off-street parking
- Double gate side access to the backyard, perfect for vehicles, boats, or caravans



Disclaimer: All information contained therein is gathered from relevant third parties sources. We cannot guarantee or give any warranty about the information provided. Interested parties must rely solely on their own enquiries.



For Lease
Please Call

View
ljhooker.com.au/62DHVG

LJ Hooker Shailer Park
(07) 3102 0829

10m x 4m workshop garage with with mezzanine storage for extra functionality
Security screens and doors throughout

Location Highlights:

- 2 minutes to Riverdale Park
- 3 minutes to Logan Hospital, Loganlea Train Station, and Meadowbrook Shopping Centre
- 4 minutes to Logan Motorway entrance
- 5 minutes to Loganlea High School
- 6 minutes to Griffith University Logan Campus
- 7 minutes to Meadowbrook Golf Course
- 10 minutes to Logan Hyperdome Shopping Centre
- 25 minutes to the Gold Coast

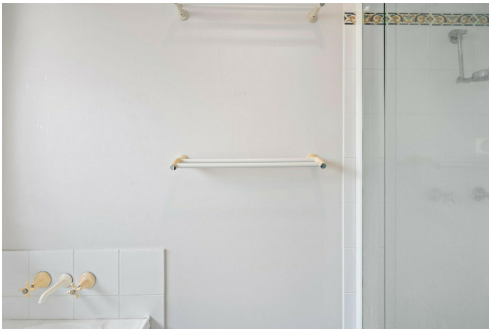
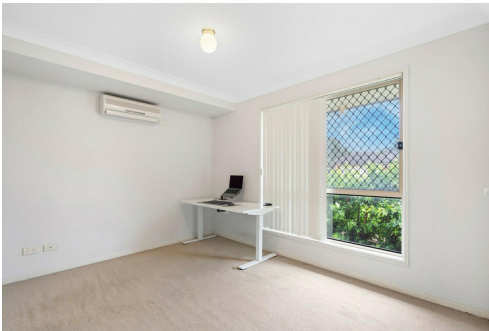
Disclaimer:

Every effort has been made to ensure the accuracy of this information, but it is not guaranteed. Prospective tenants should make their own inquiries to verify all details before entering into a tenancy agreement.

More About this Property

Property ID	62DHVG
Property Type	House
Land Area	689 sqm

LJ Hooker Shailer Park (07) 3102 0829
2/3 Mandew Street, SHAILER PARK QLD 4128
shailerpark.ljhooker.com.au | shailerpark@ljhooker.com.au



Disclaimer: All information contained therein is gathered from relevant third parties sources. We cannot guarantee or give any warranty about the information provided. Interested parties must rely solely on their own enquiries.

LJ Hooker Shailer Park
(07) 3102 0829

