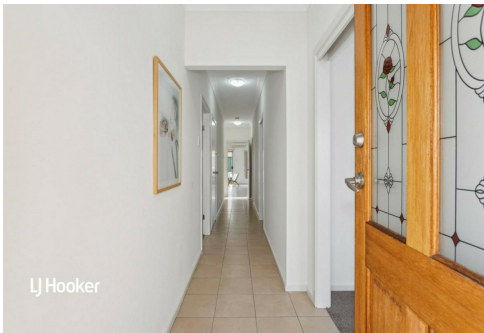
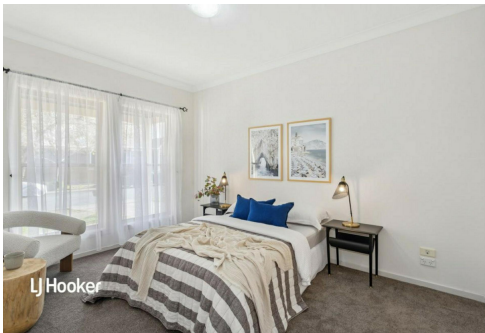




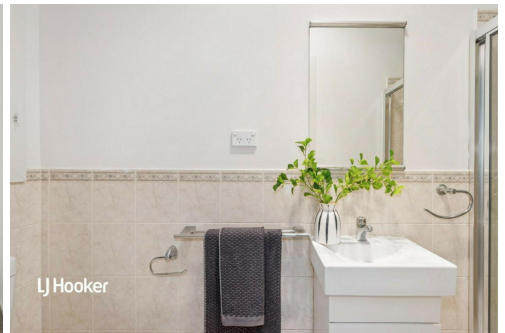
LJ Hooker



LJ Hooker



LJ Hooker



LJ Hooker

Mawson Lakes, 11 Phillipson Circuit

Prime Living in a Prime Location!



TO REGISTER AND INSPECT THIS PROPERTY VISIT: <https://tenantoptions.com.au/>

** Only applicants who have inspected the property will be considered **

Introducing a charming 4 bedroom, 2 bathroom home with a modern interior and a low maintenance yard! This beautiful house is perfect for a family looking for a cozy and easy-to-care-for living space. With its sleek design and contemporary features, you'll feel right at home the moment you step inside. Enjoy the convenience of a minimal yard that requires little upkeep, allowing you more time to relax and enjoy your surroundings.

Features include:

- * 4 spacious bedrooms, bedroom 2 and 3 with built-in robes
- * Main bedroom with walk-in robe and ensuite
- * Open-plan family and meals
- * Tiled flooring throughout with carpeted bedrooms



Disclaimer: All information contained therein is gathered from relevant third parties sources. We cannot guarantee or give any warranty about the information provided. Interested parties must rely solely on their own enquiries.

For Lease
Please Call _____

View
ljhooker.com.au/2AS0GJU

Contact
Chloe Durdin
chloed@ljhpropertymanagement.com.au

**LJ Hooker Greenwith | Golden Grove
| Mawson Lakes | Modbury
(08) 8289 6660**

- * Kitchen with ample bench and storage space
- * Stainless steel appliances including oven and gas cooktop with rangehood and dishwasher
- * Split system heating and cooling
- * Low maintenance yards
- * Single auto carport with space for a second vehicle in the driveway

Situated in Mawson Lakes, this property has schools, shops and public transport are all just moments away. A wonderful location to raise a family, and a home designed with family in mind to share moments together! Don't miss out on this wonderful opportunity to make this house your new home!

Please contact us during office hours on 8289 6660 (Monday-Friday 9am-5.30pm) if you have any queries regarding the application process. If your queries relate to an open inspection time, please be advised that all open times are updated every Friday by close of business. If you are unable to attend the open inspection or there are no open times scheduled, please send your enquiry through this website.

RLA 208516

More About this Property

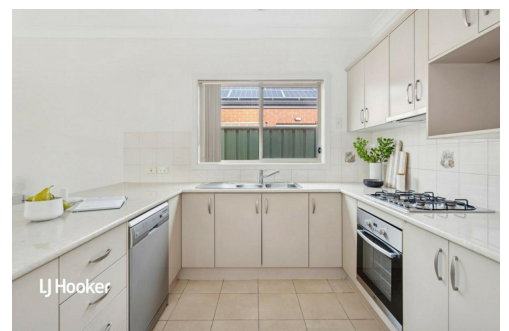
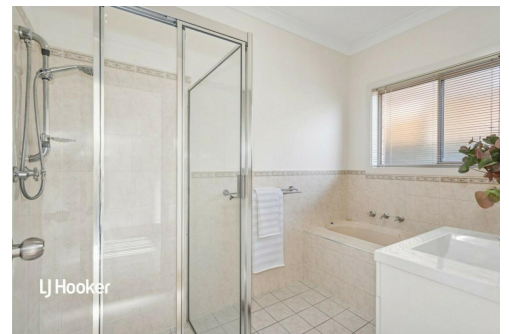
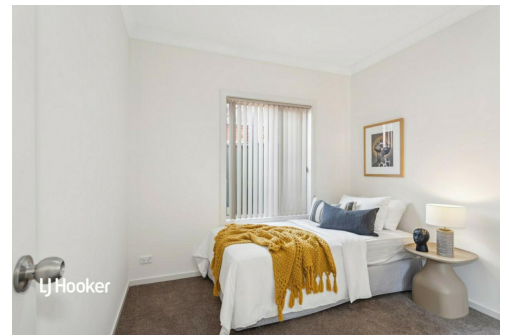
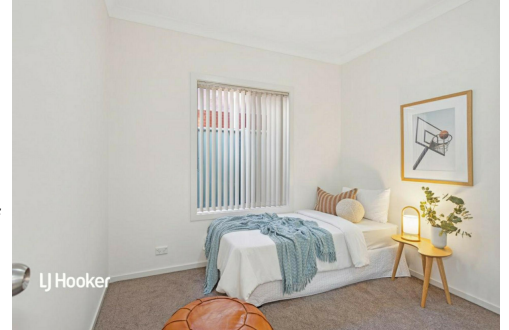
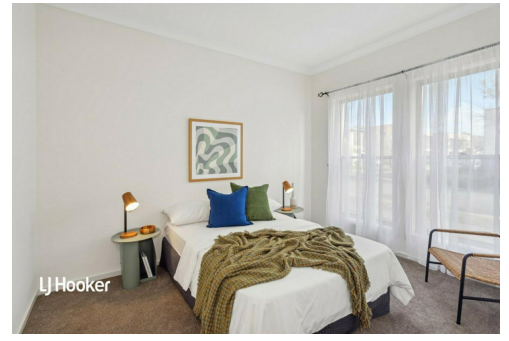
Property ID	2AS0GJU
Property Type	House
Land Area	277 sqm

Chloe Durdin

Property Investment Manager | chloed@ljhpropertymanagement.com.au

LJ Hooker Greenwith | Golden Grove | Mawson Lakes | Modbury (08) 8289 6660

North East, Shop 2, 1007 North East Road, RIDGEHAVEN SA 5097
greenwithgoldengrove.ljhooker.com.au | info@ljhsupport.com.au



Disclaimer: All information contained therein is gathered from relevant third parties sources. We cannot guarantee or give any warranty about the information provided. Interested parties must rely solely on their own enquiries.

**LJ Hooker Greenwith | Golden Grove
 | Mawson Lakes | Modbury
 (08) 8289 6660**